

## ARG21695 Mouse anti-Rat IgG1 antibody [G17E7] (FITC)

Package: 250 µg  
Store at: 4°C

### Summary

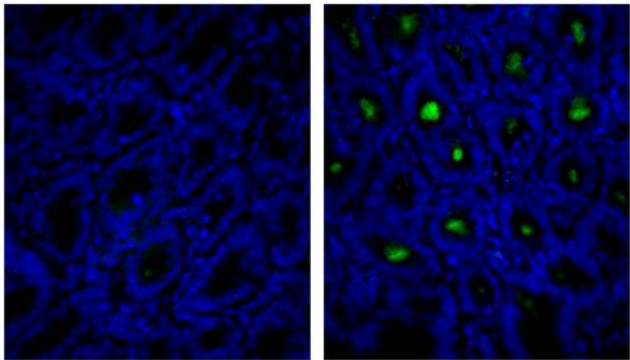
Product Description	FITC-conjugated Mouse Monoclonal antibody [G17E7] recognizes Rat IgG1
Tested Reactivity	Rat
Tested Application	FACS, FLISA, IHC-Fr
Host	Mouse
Clonality	Monoclonal
Clone	G17E7
Isotype	IgG1, kappa
Target Name	IgG1
Species	Rat
Immunogen	Rat IgG1 hybridoma
Conjugation	FITC

### Application Instructions

Application table	Application	Dilution
	FACS	< 1 ug/10 <sup>6</sup> cells
	FLISA	1:200 - 1:400
	IHC-Fr	Assay-dependent
Application Note	* The dilutions indicate recommended starting dilutions and the optimal dilutions or concentrations should be determined by the scientist.	

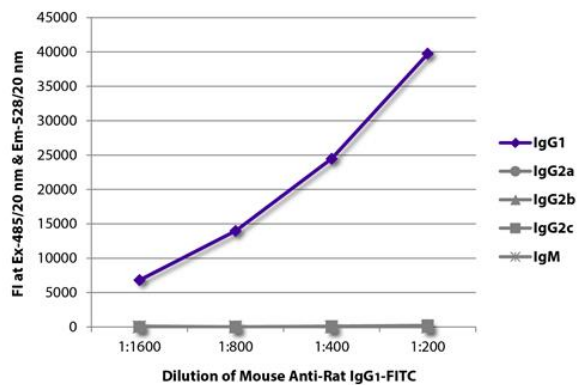
### Properties

Form	Liquid
Buffer	PBS and 0.1% Sodium azide.
Preservative	0.1% Sodium azide
Concentration	0.5 mg/ml
Storage instruction	Aliquot and store in the dark at 2-8°C. Keep protected from prolonged exposure to light. Avoid repeated freeze/thaw cycles. Suggest spin the vial prior to opening. The antibody solution should be gently mixed before use.
Note	For laboratory research only, not for drug, diagnostic or other use.



ARG21695 Mouse anti-Rat IgG1 antibody [G17E7] (FITC) IHC-Fr image

Immunohistochemistry: Frozen section of Mouse intestine tissue stained with [ARG20689](#) Rat IgG1 Isotype Control antibody [KLH/G1-2-2] (left) and [ARG21616](#) Rat anti-Mouse IgA antibody [11-44-2] (right), followed by ARG21695 Mouse anti-Rat IgG1 antibody [G17E7] (FITC) and DAPI.



ARG21695 Mouse anti-Rat IgG1 antibody [G17E7] (FITC) FLISA image

FLISA: The plate was coated with purified Rat IgG1, IgG2a, IgG2b, IgG2c and IgM. Immunoglobulins were detected with serially diluted ARG21695 Mouse anti-Rat IgG1 antibody [G17E7] (FITC).