

ARG21678

Goat anti-Human Kappa Light Chain antibody, F(ab')₂ fragment (FITC), pre-adsorbed

Package: 250 µg

Store at: 4°C

Summary

Product Description	FITC-conjugated Goat Polyclonal antibody recognizes Human Kappa Light Chain
Tested Reactivity	Hu
Tested Application	FACS, FLISA, ICC/IF, WB
Specificity	The antibody reacts with Human kappa light chains. The antibody is pre-adsorbed with Human lambda light chains, so the antibody may not react with Human lambda light chains, but may react with kappa light chains from other species.
Host	Goat
Clonality	Polyclonal
Isotype	F(ab') ₂ IgG
Target Name	Kappa Light Chain
Species	Human
Conjugation	FITC

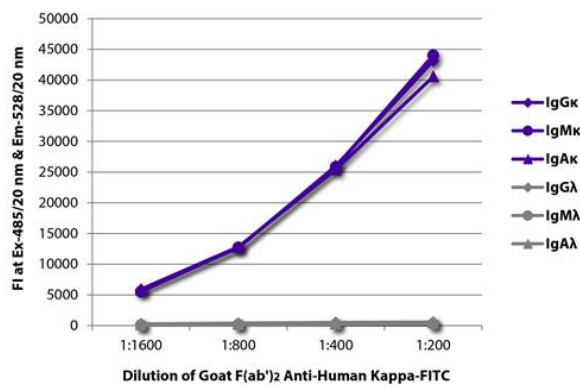
Application Instructions

Pre Adsorbed	Human lambda light chains.										
Application table	<table> <tr> <th>Application</th><th>Dilution</th></tr> <tr> <td>FACS</td><td>< 1 µg/10⁶ cells</td></tr> <tr> <td>FLISA</td><td>1:200 - 1:400</td></tr> <tr> <td>ICC/IF</td><td>Assay-dependent</td></tr> <tr> <td>WB</td><td>Assay-dependent</td></tr> </table>	Application	Dilution	FACS	< 1 µg/10 ⁶ cells	FLISA	1:200 - 1:400	ICC/IF	Assay-dependent	WB	Assay-dependent
Application	Dilution										
FACS	< 1 µg/10 ⁶ cells										
FLISA	1:200 - 1:400										
ICC/IF	Assay-dependent										
WB	Assay-dependent										
Application Note	* The dilutions indicate recommended starting dilutions and the optimal dilutions or concentrations should be determined by the scientist.										

Properties

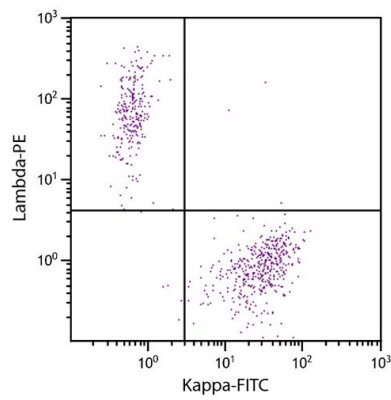
Form	Liquid
Buffer	PBS and 0.1% Sodium azide.
Preservative	0.1% Sodium azide
Concentration	0.5 mg/ml
Storage instruction	Aliquot and store in the dark at 2-8°C. Keep protected from prolonged exposure to light. Avoid repeated freeze/thaw cycles. Suggest spin the vial prior to opening. The antibody solution should be gently mixed before use.

Images



ARG21678 Goat anti-Human Kappa Light Chain antibody, F(ab')₂ fragment (FITC) (pre-adsorbed) FLISA image

FLISA: The plate was coated with purified Human IgGκ, IgMκ, IgAκ, IgGλ, IgMλ and IgAλ. Immunoglobulins were detected with serially diluted ARG21678 Goat anti-Human Kappa Light Chain antibody, F(ab')₂ fragment (FITC) (pre-adsorbed).



ARG21678 Goat anti-Human Kappa Light Chain antibody, F(ab')₂ fragment (FITC) (pre-adsorbed) FACS image

Flow Cytometry: CD19+ Human B-lymphocytes stained with ARG21678 Goat anti-Human Kappa Light Chain antibody, F(ab')₂ fragment (FITC) (pre-adsorbed) and Goat F(ab')₂ anti-Human Lambda Light Chain antibody (PE).