

## ARG21666

### Goat anti-Human IgD antibody, F(ab')<sub>2</sub> fragment (FITC), pre-adsorbed

Package: 500 µg

Store at: 4°C

## Summary

Product Description	FITC-conjugated F(ab') <sub>2</sub> fragment of Goat Polyclonal antibody recognizes Human IgD
Tested Reactivity	Hu
Tested Application	FACS, FLISA, IHC-Fr, IHC-P
Specificity	The antibody reacts with the heavy chain of Human IgD. The antibody is pre-adsorbed with Human IgG, IgM and IgA, so the antibody may not react with Human IgG, IgM and IgA, but may react with IgD from other species.
Host	Goat
Clonality	Polyclonal
Isotype	F(ab') <sub>2</sub> IgG
Target Name	IgD
Species	Human
Conjugation	FITC

## Application Instructions

Pre Adsorbed	Human IgG, IgM and IgA.										
Application table	<table> <tr> <th>Application</th><th>Dilution</th></tr> <tr> <td>FACS</td><td>&lt; 1 µg/10<sup>6</sup> cells</td></tr> <tr> <td>FLISA</td><td>Assay-dependent</td></tr> <tr> <td>IHC-Fr</td><td>Assay-dependent</td></tr> <tr> <td>IHC-P</td><td>Assay-dependent</td></tr> </table>	Application	Dilution	FACS	< 1 µg/10 <sup>6</sup> cells	FLISA	Assay-dependent	IHC-Fr	Assay-dependent	IHC-P	Assay-dependent
Application	Dilution										
FACS	< 1 µg/10 <sup>6</sup> cells										
FLISA	Assay-dependent										
IHC-Fr	Assay-dependent										
IHC-P	Assay-dependent										
Application Note	* The dilutions indicate recommended starting dilutions and the optimal dilutions or concentrations should be determined by the scientist.										

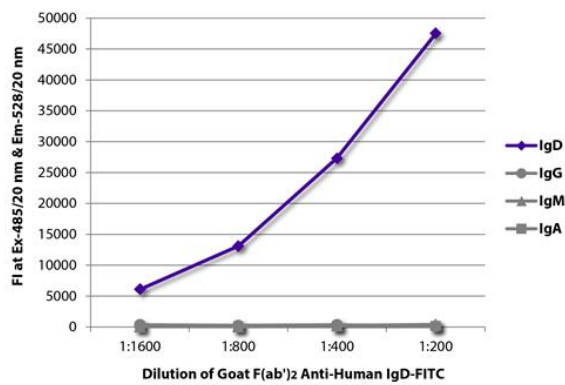
## Properties

Form	Liquid
Buffer	PBS and 0.1% Sodium azide.
Preservative	0.1% Sodium azide
Concentration	0.5 mg/ml
Storage instruction	Aliquot and store in the dark at 2-8°C. Keep protected from prolonged exposure to light. Avoid repeated freeze/thaw cycles. Suggest spin the vial prior to opening. The antibody solution should be gently mixed before use.
Note	For laboratory research only, not for drug, diagnostic or other use.

Highlight

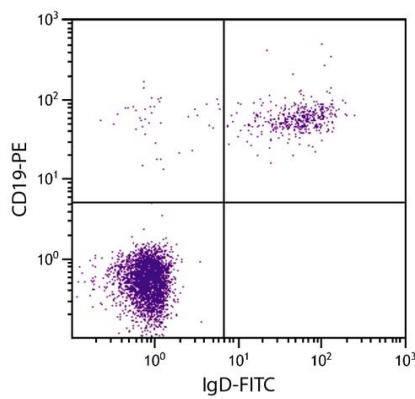
Related news:  
[Comprehensive anti-Human secondary antibodies](#)

Images



ARG21666 Goat anti-Human IgD antibody, F(ab')2 fragment (FITC) (pre-adsorbed) FLISA image

FLISA: The plate was coated with purified Human IgD, IgG, IgM and IgA. Immunoglobulins were detected with serially diluted ARG21666 Goat anti-Human IgD antibody, F(ab')2 fragment (FITC) (pre-adsorbed).



ARG21666 Goat anti-Human IgD antibody, F(ab')2 fragment (FITC) (pre-adsorbed) FACS image

Flow Cytometry: Human peripheral blood lymphocytes stained with ARG21666 Goat anti-Human IgD antibody, F(ab')2 fragment (FITC) (pre-adsorbed) and [ARG21260](#) anti-CD19 antibody [SJ25-C1] (PE).