

ARG21664 Goat anti-Human IgD antibody (PE), pre-adsorbed

Package: 250 µg
Store at: 4°C

Summary

Product Description	PE-conjugated Goat Polyclonal antibody recognizes Human IgD
Tested Reactivity	Hu
Tested Application	FACS, FLISA, IHC-Fr, IHC-P
Specificity	The antibody reacts with the heavy chain of Human IgD. The antibody is pre-adsorbed with Human IgG, IgM and IgA, so the antibody may not react with Human IgG, IgM and IgA, but may react with IgD from other species.
Host	Goat
Clonality	Polyclonal
Isotype	IgG
Target Name	IgD
Species	Human
Conjugation	PE

Application Instructions

Pre Adsorbed	Human IgG, IgM and IgA.										
Application table	<table> <tr> <th>Application</th><th>Dilution</th></tr> <tr> <td>FACS</td><td>< 0.1 µg/10⁶ cells</td></tr> <tr> <td>FLISA</td><td>< 1 µg/ml</td></tr> <tr> <td>IHC-Fr</td><td>Assay-dependent</td></tr> <tr> <td>IHC-P</td><td>Assay-dependent</td></tr> </table>	Application	Dilution	FACS	< 0.1 µg/10 ⁶ cells	FLISA	< 1 µg/ml	IHC-Fr	Assay-dependent	IHC-P	Assay-dependent
Application	Dilution										
FACS	< 0.1 µg/10 ⁶ cells										
FLISA	< 1 µg/ml										
IHC-Fr	Assay-dependent										
IHC-P	Assay-dependent										
Application Note	* The dilutions indicate recommended starting dilutions and the optimal dilutions or concentrations should be determined by the scientist.										

Properties

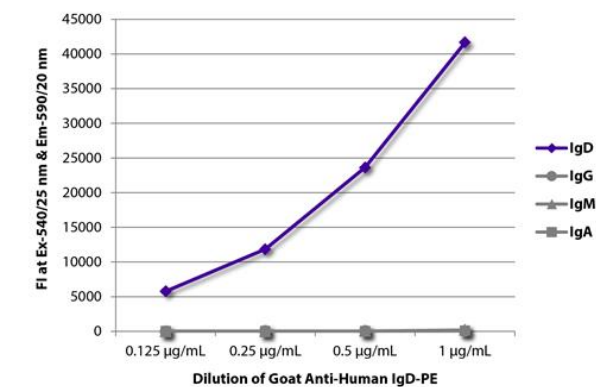
Form	Liquid
Purification	Affinity purification with immunogen.
Buffer	PBS, 0.1% Sodium azide and Sucrose.
Preservative	0.1% Sodium azide
Stabilizer	Sucrose
Concentration	0.5 mg/ml
Storage instruction	Aliquot and store in the dark at 2-8°C. Keep protected from prolonged exposure to light. Avoid repeated freeze/thaw cycles. Suggest spin the vial prior to opening. The antibody solution should be gently mixed before use.

Bioinformation

Highlight

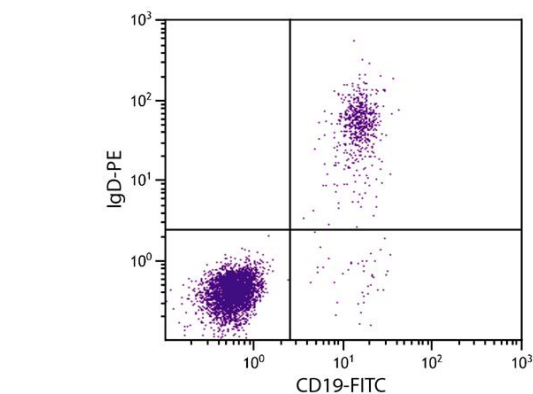
Related news:
[Comprehensive anti-Human secondary antibodies](#)

Images



ARG21664 Goat anti-Human IgD antibody (PE) (pre-adsorbed) FLISA image

FLISA: The plate was coated with purified Human IgD, IgG, IgM and IgA. Immunoglobulins were detected with serially diluted ARG21664 Goat anti-Human IgD antibody (PE) (pre-adsorbed).



ARG21664 Goat anti-Human IgD antibody (PE) (pre-adsorbed) FACS image

Flow Cytometry: Human peripheral blood lymphocytes stained with ARG21664 Goat anti-Human IgD antibody (PE) (pre-adsorbed) and [ARG21258](#) anti-CD19 antibody [SJ25-C1] (FITC).