

## ARG21657 Goat anti-Human IgD antibody, pre-adsorbed

Package: 500 µg  
Store at: -20°C

### Summary

Product Description	Goat Polyclonal antibody recognizes Human IgD
Tested Reactivity	Hu
Tested Application	ELISA, FACS, FLISA, IHC-Fr, IHC-P
Specificity	The antibody reacts with the heavy chain of Human IgD. The antibody is pre-adsorbed with Human IgG, IgM and IgA, so the antibody may not react with Human IgG, IgM and IgA, but may react with IgD from other species.
Host	Goat
Clonality	Polyclonal
Isotype	IgG
Target Name	IgD
Species	Human
Conjugation	Un-conjugated

### Application Instructions

Pre Adsorbed	Human IgG, IgM and IgA.	
Application table	Application	Dilution
	ELISA	Assay-dependent
	FACS	Assay-dependent
	FLISA	Assay-dependent
	IHC-Fr	Assay-dependent
	IHC-P	Assay-dependent
Application Note	* The dilutions indicate recommended starting dilutions and the optimal dilutions or concentrations should be determined by the scientist.	

### Properties

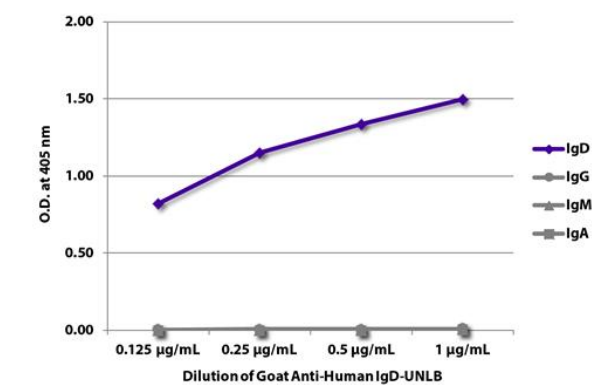
Form	Liquid
Purification	Affinity purification with immunogen.
Buffer	BBS (pH 8.2)
Concentration	1 mg/ml
Storage instruction	For continuous use, store undiluted antibody at 2-8°C for up to a week. For long-term storage, aliquot and store at -20°C. Storage in frost free freezers is not recommended. Avoid repeated freeze/thaw cycles. Suggest spin the vial prior to opening. The antibody solution should be gently mixed before use.

Bioinformation

Highlight

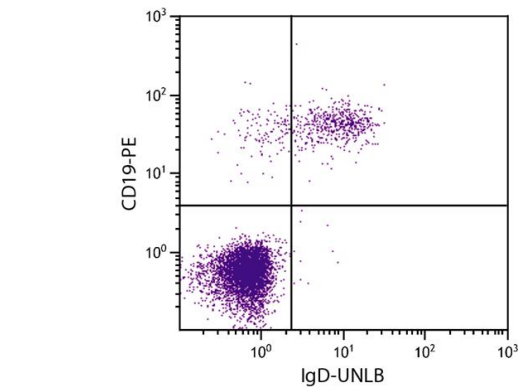
Related news:  
[Comprehensive anti-Human secondary antibodies](#)

Images



ARG21657 Goat anti-Human IgD antibody (pre-adsorbed) ELISA image

ELISA: The plate was coated with purified Human IgD, IgG, IgM, and IgA. Immunoglobulins were detected with serially diluted ARG21657 Goat anti-Human IgD antibody (pre-adsorbed) followed by [ARG23857](#) Swine anti-Goat IgG (H+L) antibody (HRP) (pre-adsorbed).



ARG21657 Goat anti-Human IgD antibody (pre-adsorbed) FACS image

Flow Cytometry: Human peripheral blood lymphocytes stained with ARG21657 Goat anti-Human IgD antibody (pre-adsorbed) and [ARG21260](#) anti-CD19 antibody [SJ25-C1] (PE) followed by [ARG23856](#) Swine anti-Goat IgG (H+L) antibody (FITC) (pre-adsorbed).