

## ARG21641

## Goat anti-Human IgA + IgG + IgM antibody, F(ab')<sub>2</sub> fragment (FITC)

Package: 500 µg

Store at: 4°C

### Summary

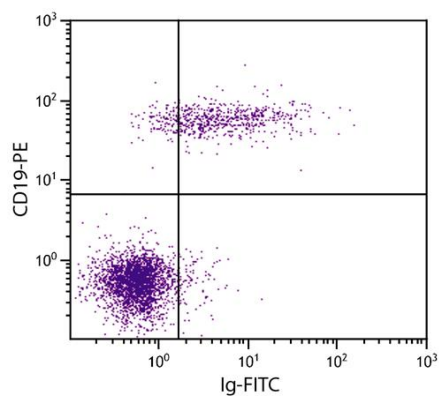
Product Description	FITC-conjugated F(ab') <sub>2</sub> fragment of Goat Polyclonal antibody recognizes Human IgA + IgG + IgM
Tested Reactivity	Hu
Tested Application	FACS, FLISA, IHC-Fr
Specificity	Reacts with the heavy and light chains of human IgG, IgM, and IgA
Host	Goat
Clonality	Polyclonal
Isotype	F(ab') <sub>2</sub> IgG
Target Name	IgA + IgG + IgM
Species	Human
Conjugation	FITC

### Application Instructions

Application table	Application	Dilution
	FACS	< 1 µg/10 <sup>6</sup> cells
	FLISA	1:100 - 1:400
	IHC-Fr	Assay-dependent
Application Note	* The dilutions indicate recommended starting dilutions and the optimal dilutions or concentrations should be determined by the scientist.	

### Properties

Form	Liquid
Buffer	PBS and 0.1% Sodium azide.
Preservative	0.1% Sodium azide
Concentration	0.5 mg/ml
Storage instruction	Aliquot and store in the dark at 2-8°C. Keep protected from prolonged exposure to light. Avoid repeated freeze/thaw cycles. Suggest spin the vial prior to opening. The antibody solution should be gently mixed before use.
Note	For laboratory research only, not for drug, diagnostic or other use.



ARG21641 Goat anti-Human IgA + IgG + IgM antibody, F(ab')<sub>2</sub> fragment (FITC) FACS image

Flow Cytometry: Human peripheral blood lymphocytes stained with ARG21641 Goat anti-Human IgA + IgG + IgM antibody, F(ab')<sub>2</sub> fragment (FITC) and [ARG21260](#) anti-CD19 antibody [SJ25-C1] (PE).