

**ARG21639**  
**Rat anti-Mouse Kappa Light Chain antibody [H139-52.1] (PE)**

Package: 100 µg

Store at: 4°C

### Summary

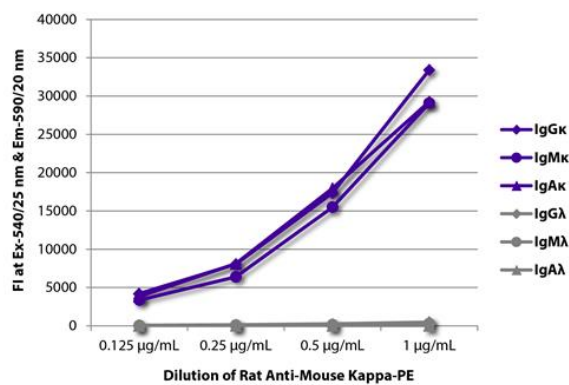
|                     |  |
|---------------------|--|
| Product Description | PE-conjugated Rat Monoclonal antibody [H139-52.1] recognizes Mouse Kappa Light Chain |
| Tested Reactivity   | Ms   |
| Tested Application  | FACS, FLISA, ICC/IF, WB  |
| Host                | Rat  |
| Clonality           | Monoclonal   |
| Clone               | H139-52.1  |
| Isotype             | IgG1, kappa  |
| Target Name         | Kappa Light Chain  |
| Species             | Mouse  |
| Conjugation         | PE   |

### Application Instructions

| Application table | Application  | Dilution                       |
|-------------------|--|--------------------------------|
|                   | FACS   | < 0.2 µg/10 <sup>6</sup> cells |
|                   | FLISA  | < 1 µg/ml                      |
|                   | ICC/IF   | Assay-dependent                |
|                   | WB   | Assay-dependent                |
| Application Note  | * The dilutions indicate recommended starting dilutions and the optimal dilutions or concentrations should be determined by the scientist. |                                |

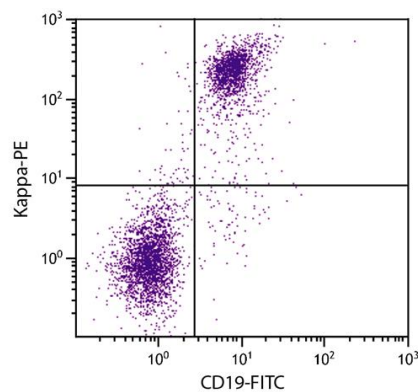
### Properties

|                     |  |
|---------------------|--|
| Form                | Liquid   |
| Buffer              | PBS, 0.1% Sodium azide and Sucrose.  |
| Preservative        | 0.1% Sodium azide  |
| Stabilizer          | Sucrose  |
| Concentration       | 0.1 mg/ml  |
| Storage instruction | Aliquot and store in the dark at 2-8°C. Keep protected from prolonged exposure to light. Avoid repeated freeze/thaw cycles. Suggest spin the vial prior to opening. The antibody solution should be gently mixed before use. |
| Note                | For laboratory research only, not for drug, diagnostic or other use.   |



ARG21639 Rat anti-Mouse Kappa Light Chain antibody [H139-52.1] (PE) FLISA image

FLISA: The plate was coated with purified Mouse IgGκ, IgMκ, IgAκ, IgGλ, IgMλ and IgAλ. Immunoglobulins were detected with serially diluted ARG21639 Rat anti-Mouse Kappa Light Chain antibody [H139-52.1] (PE).



ARG21639 Rat anti-Mouse Kappa Light Chain antibody [H139-52.1] (PE) FACS image

Flow Cytometry: BALB/c Mouse splenocytes stained with ARG21639 Rat anti-Mouse Kappa Light Chain antibody [H139-52.1] (PE) and [ARG20850](#) anti-CD19 antibody [6D5] (FITC).