

ARG21633 Rat anti-Mouse Lambda Light Chain antibody [JC5-1] (PE)

Package: 100 µg
Store at: 4°C

Summary

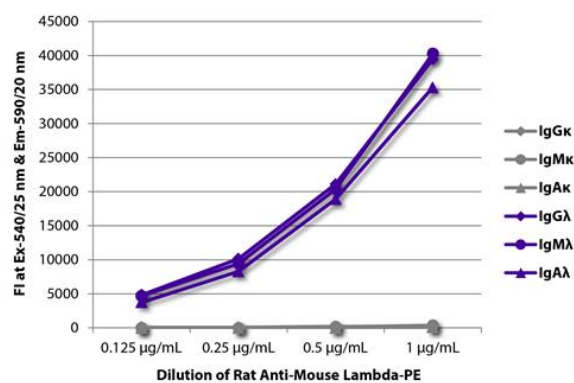
Product Description	PE-conjugated Rat Monoclonal antibody [JC5-1] recognizes Mouse Lambda Light Chain
Tested Reactivity	Ms
Tested Application	FACS, FLISA, IHC-Fr, WB
Host	Rat
Clonality	Monoclonal
Clone	JC5-1
Isotype	IgG2b, kappa
Target Name	Lambda Light Chain
Species	Mouse
Conjugation	PE

Application Instructions

Application table	Application	Dilution
	FACS	< 0.2 µg/10 ⁶ cells
	FLISA	< 1 µg/ml
	IHC-Fr	Assay-dependent
	WB	Assay-dependent
Application Note	WB: Under non-reducing condition. * The dilutions indicate recommended starting dilutions and the optimal dilutions or concentrations should be determined by the scientist.	

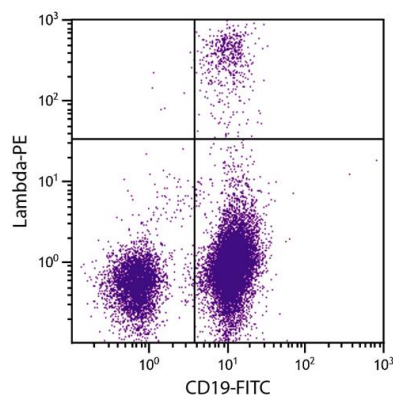
Properties

Form	Liquid
Buffer	PBS, 0.1% Sodium azide and Sucrose.
Preservative	0.1% Sodium azide
Stabilizer	Sucrose
Concentration	0.1 mg/ml
Storage instruction	Aliquot and store in the dark at 2-8°C. Keep protected from prolonged exposure to light. Avoid repeated freeze/thaw cycles. Suggest spin the vial prior to opening. The antibody solution should be gently mixed before use.
Note	For laboratory research only, not for drug, diagnostic or other use.



ARG21633 Rat anti-Mouse Lambda Light Chain antibody [JC5-1] (PE)
FLISA image

FLISA: The plate was coated with purified Mouse IgGκ, IgMκ, IgAκ, IgGλ, IgMλ and IgAλ. Immunoglobulins were detected with serially diluted ARG21633 Rat anti-Mouse Lambda Light Chain antibody [JC5-1] (PE).



ARG21633 Rat anti-Mouse Lambda Light Chain antibody [JC5-1] (PE)
FACS image

Flow Cytometry: BALB/c Mouse splenocytes stained with ARG21633 Rat anti-Mouse Lambda Light Chain antibody [JC5-1] (PE) and [ARG20850](#) anti-CD19 antibody [6D5] (FITC).