

## ARG21602 Rat anti-Mouse IgM antibody [1B4B1] (APC)

Package: 50 µg  
Store at: 4°C

### Summary

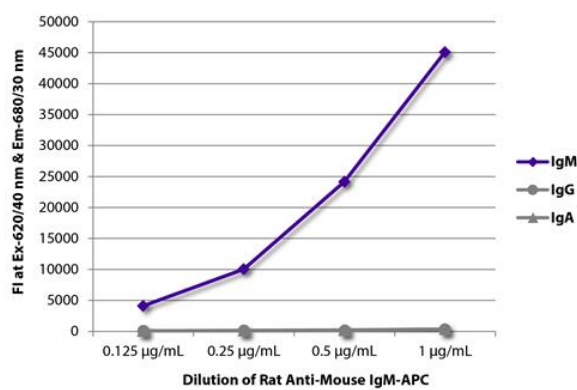
Product Description	APC-conjugated Rat Monoclonal antibody [1B4B1] recognizes Mouse IgM
Tested Reactivity	Ms
Tested Application	FACS, FLISA, IHC-Fr, WB
Host	Rat
Clonality	Monoclonal
Clone	1B4B1
Isotype	IgG1, kappa
Target Name	IgM
Species	Mouse
Conjugation	APC

### Application Instructions

Application table	Application	Dilution
	FACS	< 0.1 µg/10 <sup>6</sup> cells
	FLISA	< 1 µg/ml
	IHC-Fr	Assay-dependent
	WB	Assay-dependent
Application Note	* The dilutions indicate recommended starting dilutions and the optimal dilutions or concentrations should be determined by the scientist.	

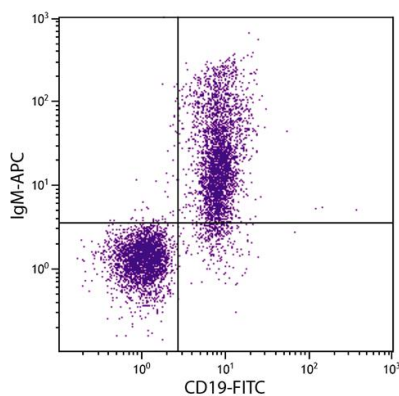
### Properties

Form	Liquid
Buffer	PBS, 0.1% Sodium azide and Sucrose.
Preservative	0.1% Sodium azide
Stabilizer	Sucrose
Concentration	0.1 mg/ml
Storage instruction	Aliquot and store in the dark at 2-8°C. Keep protected from prolonged exposure to light. Avoid repeated freeze/thaw cycles. Suggest spin the vial prior to opening. The antibody solution should be gently mixed before use.
Note	For laboratory research only, not for drug, diagnostic or other use.



ARG21602 Rat anti-Mouse IgM antibody [1B4B1] (APC) FLISA image

FLISA: The plate was coated with purified Mouse IgM, IgG and IgA. Immunoglobulins were detected with serially diluted ARG21602 Rat anti-Mouse IgM antibody [1B4B1] (APC).



ARG21602 Rat anti-Mouse IgM antibody [1B4B1] (APC) FACS image

Flow Cytometry: BALB/c Mouse splenocytes stained with ARG21602 Rat anti-Mouse IgM antibody [1B4B1] (APC) and [ARG20850](#) anti-CD19 antibody [6D5] (FITC).