

## ARG21588 Rat anti-Mouse IgD antibody [11-26] (Biotin)

Package: 250 µg  
Store at: 4°C

### Summary

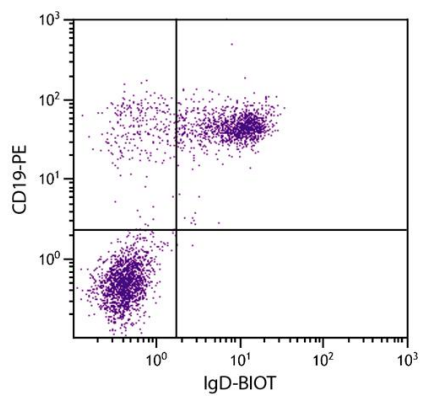
|                     |  |
|---------------------|--|
| Product Description | Biotin-conjugated Rat Monoclonal antibody [11-26] recognizes Mouse IgD |
| Tested Reactivity   | Ms   |
| Tested Application  | FACS, IHC-Fr, IP   |
| Host                | Rat  |
| Clonality           | Monoclonal   |
| Clone               | 11-26  |
| Isotype             | IgG2a, kappa   |
| Target Name         | IgD  |
| Species             | Mouse  |
| Conjugation         | Biotin   |

### Application Instructions

| Application table | Application  | Dilution                     |
|-------------------|--|------------------------------|
|                   | FACS   | < 1 µg/10 <sup>6</sup> cells |
|                   | IHC-Fr   | Assay-dependent              |
|                   | IP   | Assay-dependent              |
| Application Note  | * The dilutions indicate recommended starting dilutions and the optimal dilutions or concentrations should be determined by the scientist. |                              |

### Properties

|                     |  |
|---------------------|--|
| Form                | Liquid   |
| Buffer              | PBS and 0.1% Sodium azide.   |
| Preservative        | 0.1% Sodium azide  |
| Concentration       | 0.5 mg/ml  |
| Storage instruction | Aliquot and store in the dark at 2-8°C. Keep protected from prolonged exposure to light. Avoid repeated freeze/thaw cycles. Suggest spin the vial prior to opening. The antibody solution should be gently mixed before use. |
| Note                | For laboratory research only, not for drug, diagnostic or other use.   |



ARG21588 Rat anti-Mouse IgD antibody [11-26] (Biotin) FACS image

Flow Cytometry: BALB/c Mouse splenocytes stained with ARG21588 Rat anti-Mouse IgD antibody [11-26] (Biotin) and [ARG20852](#) anti-CD19 antibody [6D5] (PE) followed by Streptavidin (FITC).