

ARG21536

Goat anti-Mouse IgM antibody, F(ab')₂ fragment (FITC), pre-adsorbed

Package: 250 µg

Store at: 4°C

Summary

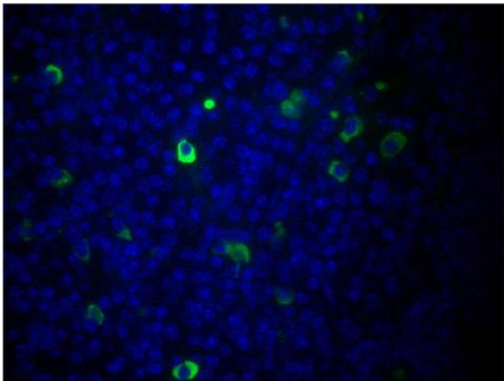
Product Description	FITC-conjugated F(ab') ₂ fragment of Goat Polyclonal antibody recognizes Mouse IgM
Tested Reactivity	Ms
Tested Application	FACS, FLISA, ICC/IF, IHC-Fr, IHC-P
Specificity	Reacts with the heavy chain of mouse IgM
Host	Goat
Clonality	Polyclonal
Isotype	F(ab') ₂ IgG
Target Name	IgM
Species	Mouse
Conjugation	FITC

Application Instructions

Pre Adsorbed	Mouse IgG and IgA; Human immunoglobulins and pooled sera.	
Application table	Application	Dilution
	FACS	< 1 µg/10 ⁶ cells
	FLISA	1:100 - 1:400
	ICC/IF	Assay-dependent
	IHC-Fr	Assay-dependent
	IHC-P	Assay-dependent
Application Note	* The dilutions indicate recommended starting dilutions and the optimal dilutions or concentrations should be determined by the scientist.	

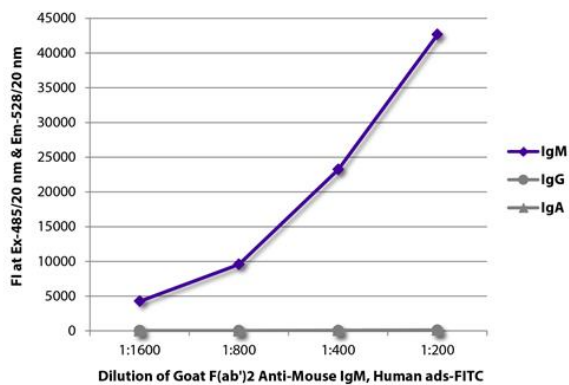
Properties

Form	Liquid
Buffer	PBS and 0.1% Sodium azide.
Preservative	0.1% Sodium azide
Concentration	0.5 mg/ml
Storage instruction	Aliquot and store in the dark at 2-8°C. Keep protected from prolonged exposure to light. Avoid repeated freeze/thaw cycles. Suggest spin the vial prior to opening. The antibody solution should be gently mixed before use.
Note	For laboratory research only, not for drug, diagnostic or other use.



ARG21536 Goat anti-Mouse IgM antibody, F(ab')2 fragment (FITC) (pre-adsorbed) IHC-P image

Immunohistochemistry: Paraffin-embedded Mouse lymph node tissue stained with ARG21536 Goat anti-Mouse IgM antibody, F(ab')2 fragment (FITC) (pre-adsorbed) followed by DAPI.



ARG21536 Goat anti-Mouse IgM antibody, F(ab')2 fragment (FITC) (pre-adsorbed) FLISA image

FLISA: The plate was coated with purified Mouse IgM, IgG and IgA. Immunoglobulins were detected with serially diluted ARG21536 Goat anti-Mouse IgM antibody, F(ab')2 fragment (FITC) (pre-adsorbed).