

ARG21479 anti-IL10 antibody [JES5-16E3] (FITC)

Package: 50 µg
Store at: 4°C

Summary

Product Description	FITC-conjugated Rat Monoclonal antibody [JES5-16E3] recognizes IL10
Tested Reactivity	Ms
Tested Application	ELISA, ELISPOT, FACS, ICC/IF, IHC-Fr, Neut
Specificity	Mouse IL-10.
Host	Rat
Clonality	Monoclonal
Clone	JES5-16E3
Isotype	IgG2b, kappa
Target Name	IL10
Species	Mouse
Immunogen	E. coli-expressed mouse IL-10
Conjugation	FITC
Alternate Names	IL10A; GVHDS; TGIF; IL-10; Cytokine synthesis inhibitory factor; CSIF; Interleukin-10

Application Instructions

Application table	Application	Dilution
	ELISA	Assay-dependent
	ELISPOT	Assay-dependent
	FACS	< 1 µg/10 ⁶ cells
	ICC/IF	Assay-dependent
	IHC-Fr	Assay-dependent
	Neut	Assay-dependent
	Application Note	* The dilutions indicate recommended starting dilutions and the optimal dilutions or concentrations should be determined by the scientist.

Properties

Form	Liquid
Buffer	PBS and 0.1% Sodium azide.
Preservative	0.1% Sodium azide
Concentration	0.1 mg/ml
Storage instruction	Aliquot and store in the dark at 2-8°C. Keep protected from prolonged exposure to light. Avoid

repeated freeze/thaw cycles. Suggest spin the vial prior to opening. The antibody solution should be gently mixed before use.

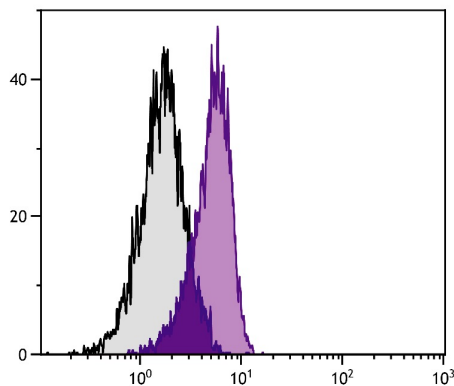
Note

For laboratory research only, not for drug, diagnostic or other use.

Bioinformation

Database links	GeneID: 16153 Mouse Swiss-port # P18893 Mouse
Gene Symbol	IL10
Gene Full Name	interleukin 10
Background	The protein encoded by this gene is a cytokine produced primarily by monocytes and to a lesser extent by lymphocytes. This cytokine has pleiotropic effects in immunoregulation and inflammation. It down-regulates the expression of Th1 cytokines, MHC class II Ags, and costimulatory molecules on macrophages. It also enhances B cell survival, proliferation, and antibody production. This cytokine can block NF-kappa B activity, and is involved in the regulation of the JAK-STAT signaling pathway. Knockout studies in mice suggested the function of this cytokine as an essential immunoregulator in the intestinal tract. Mutations in this gene are associated with an increased susceptibility to HIV-1 infection and rheumatoid arthritis.[provided by RefSeq, May 2011]
Function	Inhibits the synthesis of a number of cytokines, including IFN-gamma, IL-2, IL-3, TNF and GM-CSF produced by activated macrophages and by helper T-cells. [UniProt]
Calculated Mw	21 kDa

Images



ARG21479 anti-IL10 antibody [JES5-16E3] (FITC) FACS image

Flow Cytometry: PMA and Ionomycin-stimulated BALB/c Mouse splenocytes stained with ARG21479 anti-IL10 antibody [JES5-16E3] (FITC).