

## ARG21300 anti-CD4 antibody [RFT4] (APC)

Package: 50 tests  
Store at: 4°C

### Summary

Product Description	APC-conjugated Mouse Monoclonal antibody [RFT4] recognizes CD4
Tested Reactivity	Hu
Tested Application	FACS, ICC/IF, IHC-Fr, WB
Specificity	Human CD4.
Host	Mouse
Clonality	Monoclonal
Clone	RFT4
Isotype	IgG1, kappa
Target Name	CD4
Species	Human
Immunogen	Thymocytes and E-rosetted lymphocytes
Conjugation	APC
Alternate Names	CD4mut; CD antigen CD4; T-cell surface glycoprotein CD4; T-cell surface antigen T4/Leu-3

### Application Instructions

Application table	Application	Dilution
	FACS	10 µl/10 <sup>6</sup> cells
	ICC/IF	Assay-dependent
	IHC-Fr	Assay-dependent
	WB	Assay-dependent
Application Note	* The dilutions indicate recommended starting dilutions and the optimal dilutions or concentrations should be determined by the scientist.	

### Properties

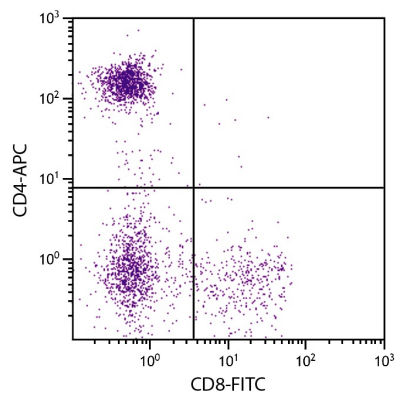
Form	Liquid
Buffer	PBS, 0.1% Sodium azide and Sucrose.
Preservative	0.1% Sodium azide
Stabilizer	Sucrose
Storage instruction	Aliquot and store in the dark at 2-8°C. Keep protected from prolonged exposure to light. Avoid repeated freeze/thaw cycles. Suggest spin the vial prior to opening. The antibody solution should be gently mixed before use.

Note For laboratory research only, not for drug, diagnostic or other use.

## Bioinformation

---

Database links	<a href="#">GeneID: 920 Human</a> <a href="#">Swiss-port # P01730 Human</a>
Gene Symbol	CD4
Gene Full Name	CD4 molecule
Background	CD4 is a membrane glycoprotein of T lymphocytes that interacts with major histocompatibility complex class II antigens and is also a receptor for the human immunodeficiency virus. This gene is expressed not only in T lymphocytes, but also in B cells, macrophages, and granulocytes. It is also expressed in specific regions of the brain. The protein functions to initiate or augment the early phase of T-cell activation, and may function as an important mediator of indirect neuronal damage in infectious and immune-mediated diseases of the central nervous system. Multiple alternatively spliced transcript variants encoding different isoforms have been identified in this gene. [provided by RefSeq, Aug 2010]
Function	CD4 is an integral membrane glycoprotein that plays an essential role in the immune response and serves multiple functions in responses against both external and internal offenses. In T-cells, functions primarily as a coreceptor for MHC class II molecule:peptide complex. The antigens presented by class II peptides are derived from extracellular proteins while class I peptides are derived from cytosolic proteins. Interacts simultaneously with the T-cell receptor (TCR) and the MHC class II presented by antigen presenting cells (APCs). In turn, recruits the Src kinase LCK to the vicinity of the TCR-CD3 complex. LCK then initiates different intracellular signaling pathways by phosphorylating various substrates ultimately leading to lymphokine production, motility, adhesion and activation of T-helper cells. In other cells such as macrophages or NK cells, plays a role in differentiation/activation, cytokine expression and cell migration in a TCR/LCK-independent pathway. Participates in the development of T-helper cells in the thymus and triggers the differentiation of monocytes into functional mature macrophages. [UniProt]
Highlight	Related products: <a href="#">CD4 antibodies</a> ; <a href="#">CD4 ELISA Kits</a> ; <a href="#">CD4 Duos / Panels</a> ; <a href="#">Anti-Mouse IgG secondary antibodies</a> ; Related news: <a href="#">New antibody panels and duos for Tumor immune microenvironment</a> <a href="#">Tumor-Infiltrating Lymphocytes (TILs)</a>
Research Area	Developmental Biology antibody; Immune System antibody; Regulatory T cells Study antibody; T-cell infiltration Study antibody; Tumor-infiltrating Lymphocyte Study antibody
Calculated Mw	51 kDa
PTM	Palmitoylation and association with LCK contribute to the enrichment of CD4 in lipid rafts.



ARG21300 anti-CD4 antibody [RFT4] (APC) FACS image

Flow Cytometry: Human peripheral blood lymphocytes stained with [ARG21300](#) anti-CD4 antibody [RFT4] (APC) and [ARG21311](#) anti-CD8 antibody [RFT8] (FITC).