

## ARG21275 anti-CD20 antibody [B-Ly1] (Biotin)

Package: 50 tests  
Store at: 4°C

### Summary

Product Description	Biotin-conjugated Mouse Monoclonal antibody [B-Ly1] recognizes CD20
Tested Reactivity	Hu
Tested Application	BL, FACS, IHC-Fr, IHC-P
Specificity	Human CD20
Host	Mouse
Clonality	Monoclonal
Clone	B-Ly1
Isotype	IgG1, kappa
Target Name	CD20
Species	Human
Conjugation	Biotin
Alternate Names	Bp35; LEU-16; B-lymphocyte surface antigen B1; B-lymphocyte antigen CD20; CD20; S7; CD antigen CD20; Leukocyte surface antigen Leu-16; B1; CVID5; Membrane-spanning 4-domains subfamily A member 1; MS4A2

### Application Instructions

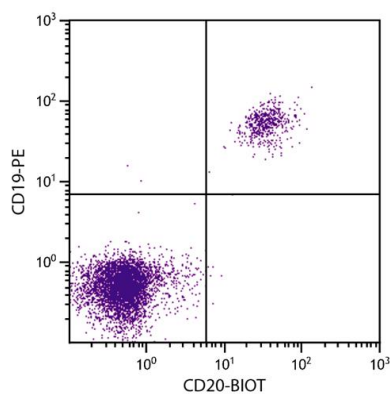
Application table	Application	Dilution
	BL	Assay-dependent
	FACS	10 µl/10 <sup>6</sup> cells
	IHC-Fr	Assay-dependent
	IHC-P	Assay-dependent
Application Note	* The dilutions indicate recommended starting dilutions and the optimal dilutions or concentrations should be determined by the scientist.	

### Properties

Form	Liquid
Buffer	PBS and 0.1% Sodium azide.
Preservative	0.1% Sodium azide
Storage instruction	Aliquot and store in the dark at 2-8°C. Keep protected from prolonged exposure to light. Avoid repeated freeze/thaw cycles. Suggest spin the vial prior to opening. The antibody solution should be gently mixed before use.
Note	For laboratory research only, not for drug, diagnostic or other use.

Database links	<a href="#">GeneID: 931 Human</a> <a href="#">Swiss-port # P11836 Human</a>
Gene Symbol	MS4A1
Gene Full Name	membrane-spanning 4-domains, subfamily A, member 1
Background	CD20 is a member of the membrane-spanning 4A gene family. Members of this nascent protein family are characterized by common structural features and similar intron/exon splice boundaries and display unique expression patterns among hematopoietic cells and nonlymphoid tissues. This gene encodes a B-lymphocyte surface molecule which plays a role in the development and differentiation of B-cells into plasma cells. This family member is localized to 11q12, among a cluster of family members. Alternative splicing of this gene results in two transcript variants which encode the same protein. [provided by RefSeq, Jul 2008]
Function	CD20 is a B-lymphocyte-specific membrane protein. It plays a role in the regulation of cellular calcium influx necessary for the development, differentiation, and activation of B-lymphocytes (PubMed:3925015, PubMed:7684739, PubMed:12920111). Functions as a store-operated calcium (SOC) channel component promoting calcium influx after activation by the B-cell receptor/BCR (PubMed:7684739, PubMed:12920111, PubMed:18474602). [UniProt]
Highlight	Related products: <a href="#">CD20 antibodies</a> ; <a href="#">CD20 ELISA Kits</a> ; <a href="#">CD20 Duos / Panels</a> ; <a href="#">Anti-Mouse IgG secondary antibodies</a> ; Related news: <a href="#">New antibody panels and duos for Tumor immune microenvironment</a> <a href="#">Tumor-Infiltrating Lymphocytes (TILs)</a> <a href="#">Exploring Antiviral Immune Response</a>
Research Area	Cancer antibody; Developmental Biology antibody; Immune System antibody; B cell Marker antibody; Immature B Cell Marker antibody; Inflammatory Cell Marker antibody; Tumor-infiltrating Lymphocyte Study antibody
Calculated Mw	33 kDa
PTM	Phosphorylated. Might be functionally regulated by protein kinase(s).

Images



ARG21275 anti-CD20 antibody [B-Ly1] (Biotin) FACS image

Flow Cytometry: Human peripheral blood lymphocytes stained with ARG21275 anti-CD20 antibody [B-Ly1] (Biotin) and [ARG21260](#) anti-CD19 antibody [SJ25-C1] (PE) followed by Streptavidin (FITC).