

ARG21230 anti-Bu1a + Bu1b antibody [AV20] (Biotin)

Package: 250 µg
Store at: 4°C

Summary

| | |
|---------------------|---|
| Product Description | Biotin-conjugated Mouse Monoclonal antibody [AV20] recognizes Bu1a + Bu1b |
| Tested Reactivity | Chk |
| Tested Application | FACS, ICC/IF, IHC-Fr, IHC-P |
| Specificity | The clone AV20 recognizes a monomorphic determinant on the Bu-1 B cell-associated alloantigens of both RPL 6(3) (Bu-1a) and 7(2) (Bu-1b) lines of inbred chickens. The antibody also identifies B cells in partially inbred birds. The clone AV20 does not cross react with turkey cells when analyzed by flow cytometry. |
| Host | Mouse |
| Clonality | Monoclonal |
| Clone | AV20 |
| Isotype | IgG1, kappa |
| Target Name | Bu1a + Bu1b |
| Species | Chicken |
| Immunogen | Chicken peripheral blood lymphocytes and splenocytes |
| Conjugation | Biotin |

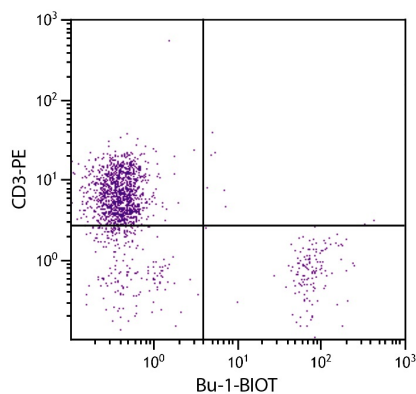
Application Instructions

| Application table | Application | Dilution |
|-------------------|--|------------------------------|
| | FACS | < 1 µg/10 ⁶ cells |
| | ICC/IF | Assay-dependent |
| | IHC-Fr | Assay-dependent |
| | IHC-P | Assay-dependent |
| Application Note | * The dilutions indicate recommended starting dilutions and the optimal dilutions or concentrations should be determined by the scientist. | |

Properties

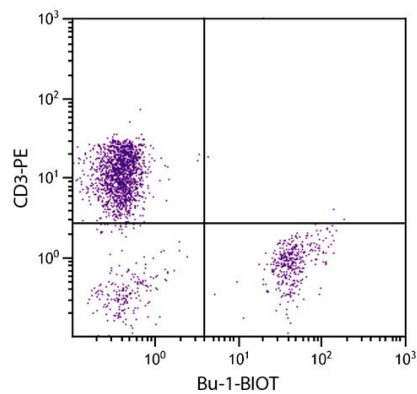
| | |
|---------------------|--|
| Form | Liquid |
| Buffer | PBS and 0.1% Sodium azide. |
| Preservative | 0.1% Sodium azide |
| Concentration | 0.5 mg/ml |
| Storage instruction | Aliquot and store in the dark at 2-8°C. Keep protected from prolonged exposure to light. Avoid repeated freeze/thaw cycles. Suggest spin the vial prior to opening. The antibody solution should be gently mixed before use. |

Images



ARG21230 anti-Bu1a + Bu1b antibody [AV20] (Biotin) FACS image

Flow Cytometry: Chicken peripheral blood mononuclear cells stained with [ARG21230](#) anti-Bu1a + Bu1b antibody [AV20] (Biotin) and [ARG21153](#) anti-CD3 epsilon antibody [CT-3] (PE).



ARG21230 anti-Bu1a + Bu1b antibody [AV20] (Biotin) FACS image

Flow Cytometry: Chicken peripheral blood lymphocytes stained with ARG21230 anti-Bu1a + Bu1b antibody [AV20] (Biotin) and [ARG21153](#) anti-CD3 epsilon antibody [CT-3] (PE) followed by Streptavidin (FITC).