

ARG21228 anti-Bu1a + Bu1b antibody [AV20]

Package: 250 µg
Store at: -20°C

Summary

Product Description	Mouse Monoclonal antibody [AV20] recognizes Bu1a + Bu1b
Tested Reactivity	Chk
Tested Application	FACS, ICC/IF, IHC-Fr, IHC-P, IP
Specificity	The clone AV20 recognizes a monomorphic determinant on the Bu-1 B cell-associated alloantigens of both RPL 6(3) (Bu-1a) and 7(2) (Bu-1b) lines of inbred chickens. The antibody also identifies B cells in partially inbred birds. The clone AV20 does not cross react with turkey cells when analyzed by flow cytometry.
Host	Mouse
Clonality	Monoclonal
Clone	AV20
Isotype	IgG1, kappa
Target Name	Bu1a + Bu1b
Species	Chicken
Immunogen	Chicken peripheral blood lymphocytes and splenocytes
Conjugation	Un-conjugated

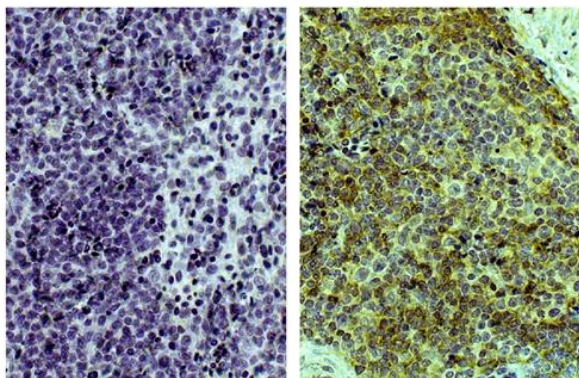
Application Instructions

Application table	Application	Dilution
	FACS	< 1 µg/10 ⁶ cells
	ICC/IF	Assay-dependent
	IHC-Fr	Assay-dependent
	IHC-P	Assay-dependent
	IP	Assay-dependent
	Application Note	* The dilutions indicate recommended starting dilutions and the optimal dilutions or concentrations should be determined by the scientist.

Properties

Form	Liquid
Buffer	BBS (pH 8.2)
Concentration	0.5 mg/ml
Storage instruction	For continuous use, store undiluted antibody at 2-8°C for up to a week. For long-term storage, aliquot and store at -20°C. Storage in frost free freezers is not recommended. Avoid repeated freeze/thaw cycles. Suggest spin the vial prior to opening. The antibody solution should be gently mixed before use.

Images



ARG21228 anti-Bu1a + Bu1b antibody [AV20] IHC-P image

Immunohistochemistry: Paraffin-embedded Chicken spleen tissue stained with ARG21228 anti-Bu1a + Bu1b antibody [AV20] (right) followed by anti-Mouse IgG antibody (HRP), DAB and hematoxylin.