

ARG21201 anti-MHC Class I antibody [F21-2] (FITC)

Package: 100 µg
Store at: 4°C

Summary

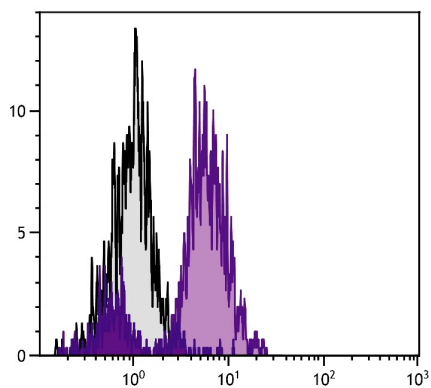
Product Description	FITC-conjugated Mouse Monoclonal antibody [F21-2] recognizes MHC Class I
Tested Reactivity	Chk, Turkey
Tested Application	BL, EM, FACS, IHC-Fr, WB
Specificity	Chicken/Turkey MHC Class I. The clone F21-2 also reacts with turkey MHC Class I.
Host	Mouse
Clonality	Monoclonal
Clone	F21-2
Isotype	IgG1, kappa
Target Name	MHC Class I
Species	Chicken
Conjugation	FITC

Application Instructions

Application table	Application	Dilution
	BL	Assay-dependent
	EM	Assay-dependent
	FACS	< 1 µg/10 ⁶ cells
	IHC-Fr	Assay-dependent
	WB	Assay-dependent
Application Note	* The dilutions indicate recommended starting dilutions and the optimal dilutions or concentrations should be determined by the scientist.	

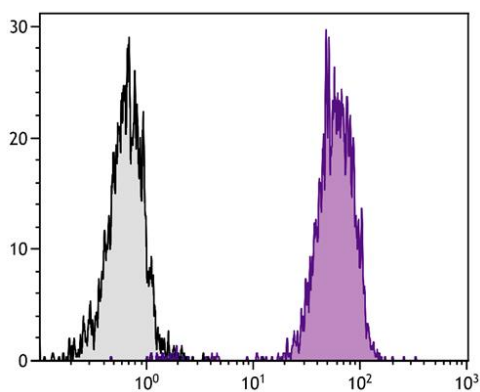
Properties

Form	Liquid
Buffer	PBS and 0.1% Sodium azide.
Preservative	0.1% Sodium azide
Concentration	0.5 mg/ml
Storage instruction	Aliquot and store in the dark at 2-8°C. Keep protected from prolonged exposure to light. Avoid repeated freeze/thaw cycles. Suggest spin the vial prior to opening. The antibody solution should be gently mixed before use.
Note	For laboratory research only, not for drug, diagnostic or other use.



ARG21201 anti-MHC Class I antibody [F21-2] (FITC) FACS image

Flow Cytometry: Chicken peripheral blood mononuclear cells stained with ARG21201 anti-MHC Class I antibody [F21-2] (FITC).



ARG21201 anti-MHC Class I antibody [F21-2] (FITC) FACS image

Flow Cytometry: Chicken peripheral blood lymphocytes stained with ARG21201 anti-MHC Class I antibody [F21-2] (FITC).