

## ARG21190 anti-CD45 antibody [LT40] (APC)

Package: 50 µg  
Store at: 4°C

### Summary

Product Description	APC-conjugated Mouse Monoclonal antibody [LT40] recognizes CD45
Tested Reactivity	Chk
Tested Application	FACS, IHC-Fr, IHC-P, IHC-Wmt
Specificity	The ability of The clone LT40 to discriminate the CD45 <sup>low</sup> subpopulation provides a suitable marker for the CD3-CD4-CD8 <sup>low</sup> immediate precursors to the CD3-CD4+CD8 <sup>+</sup> thymocytes.
Host	Mouse
Clonality	Monoclonal
Clone	LT40
Isotype	IgM, kappa
Target Name	CD45
Species	Chicken
Immunogen	Chicken bursal lymphocytes
Conjugation	APC

### Application Instructions

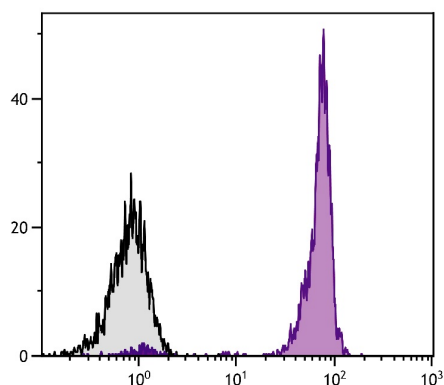
Application table	Application	Dilution
	FACS	< 0.2 µg/10 <sup>6</sup> cells
	IHC-Fr	Assay-dependent
	IHC-P	Assay-dependent
	IHC-Wmt	Assay-dependent
Application Note	* The dilutions indicate recommended starting dilutions and the optimal dilutions or concentrations should be determined by the scientist.	

### Properties

Form	Liquid
Buffer	PBS, 0.1% Sodium azide and Sucrose.
Preservative	0.1% Sodium azide
Stabilizer	Sucrose
Concentration	0.1 mg/ml
Storage instruction	Aliquot and store in the dark at 2-8°C. Keep protected from prolonged exposure to light. Avoid repeated freeze/thaw cycles. Suggest spin the vial prior to opening. The antibody solution should be gently mixed before use.

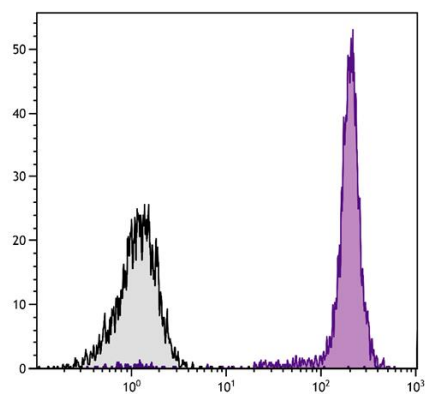
## Images

---



ARG21190 anti-CD45 antibody [LT40] (APC) FACS image

Flow Cytometry: Chicken peripheral blood mononuclear cells stained with ARG21190 anti-CD45 antibody [LT40] (APC).



ARG21190 anti-CD45 antibody [LT40] (APC) FACS image

Flow Cytometry: Chicken peripheral blood lymphocytes stained with ARG21190 anti-CD45 antibody [LT40] (APC).