

ARG21183 anti-CD28 antibody [AV7] (FITC)

Package: 250 µg
Store at: 4°C

Summary

| | |
|---------------------|----------------------------------------------------------------------------------------------------|
| Product Description | FITC-conjugated Mouse Monoclonal antibody [AV7] recognizes CD28 |
| Tested Reactivity | Chk, Turkey |
| Tested Application | FACS, ICC/IF, IHC-Fr |
| Specificity | Chicken/Turkey CD28. The clone AV7 also reacts with turkey CD28 as demonstrated by flow cytometry. |
| Host | Mouse |
| Clonality | Monoclonal |
| Clone | AV7 |
| Isotype | IgG1, kappa |
| Target Name | CD28 |
| Species | Chicken |
| Immunogen | Chicken peripheral blood lymphocytes |
| Conjugation | FITC |
| Alternate Names | Tp44; TP44; T-cell-specific surface glycoprotein CD28; CD antigen CD28 |

Application Instructions

| Application table | Application | Dilution |
|-------------------|--------------------------------------------------------------------------------------------------------------------------------------------|------------------------------|
| | FACS | < 1 µg/10 ⁶ cells |
| | ICC/IF | Assay-dependent |
| | IHC-Fr | Assay-dependent |
| Application Note | * The dilutions indicate recommended starting dilutions and the optimal dilutions or concentrations should be determined by the scientist. | |

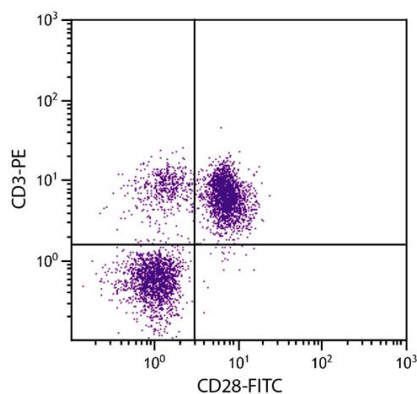
Properties

| | |
|---------------------|------------------------------------------------------------------------------------------------------------------------------------------------------------------------------------------------------------------------------|
| Form | Liquid |
| Buffer | PBS and 0.1% Sodium azide. |
| Preservative | 0.1% Sodium azide |
| Concentration | 0.5 mg/ml |
| Storage instruction | Aliquot and store in the dark at 2-8°C. Keep protected from prolonged exposure to light. Avoid repeated freeze/thaw cycles. Suggest spin the vial prior to opening. The antibody solution should be gently mixed before use. |
| Note | For laboratory research only, not for drug, diagnostic or other use. |

Bioinformation

| | |
|----------------|---------------------------------------------------------------------------------------------------------------------------------------------------------------------------------------------------------------------------------------------------------------------------------------|
| Database links | GeneID: 396249 Chicken Swiss-port # P31043 Chicken |
| Gene Symbol | CD28 |
| Gene Full Name | CD28 molecule |
| Background | The protein encoded by this gene is essential for T-cell proliferation and survival, cytokine production, and T-helper type-2 development. Several alternatively spliced transcript variants encoding different isoforms have been found for this gene.[provided by RefSeq, Jul 2011] |
| Function | Involved in T-cell activation, the induction of cell proliferation and cytokine production and promotion of T-cell survival. [UniProt] |
| Research Area | Developmental Biology antibody; Immune System antibody; Cytotoxic T Cell Surface Study antibody |
| Calculated Mw | 25 kDa |
| PTM | CD40LG induces tyrosine phosphorylation of isoform 3. |

Images



ARG21183 anti-CD28 antibody [AV7] (FITC) FACS image

Flow Cytometry: Chicken peripheral blood lymphocytes stained with ARG21183 anti-CD28 antibody [AV7] (FITC) and [ARG21153](#) anti-CD3 antibody [CT-3] (PE).