

## ARG21035 anti-KLRG1 antibody [2F1] (PE)

Package: 50 µg  
Store at: 4°C

### Summary

Product Description	PE-conjugated Syrian Hamster Monoclonal antibody [2F1] recognizes KLRG1
Tested Reactivity	Hu, Ms
Tested Application	FACS, WB
Specificity	The clone 2F1 reacts with mouse killer cell lectin-like receptor G1. The 2F1 antibody stains 30-60% of NK1.1+CD3- splenocytes, and a small fraction of T cells in all mouse strains tested (C57BL/6, BALB/c, 129/J, C3H.SW, AKR/J, SJL).
Host	Syrian Hamster
Clonality	Monoclonal
Clone	2F1
Isotype	IgG2
Target Name	KLRG1
Species	Mouse
Immunogen	IL-2-activated NK cells (A-LAK cells) from B6 (H-2b) mice
Conjugation	PE
Alternate Names	2F1; MAFA-L; C-type lectin domain family 15 member A; MAFA-2F1; MAFA-like receptor; CLEC15A; Killer cell lectin-like receptor subfamily G member 1; MAFA; ITIM-containing receptor MAFA-L; Mast cell function-associated antigen; MAFA-LIKE

### Application Instructions

Application table	Application	Dilution
	FACS	< 0.2 µg/10 <sup>6</sup> cells
	WB	Assay-dependent
Application Note	WB: Under non-reducing condition. * The dilutions indicate recommended starting dilutions and the optimal dilutions or concentrations should be determined by the scientist.	

### Properties

Form	Liquid
Buffer	PBS, 0.1% Sodium azide and Sucrose.
Preservative	0.1% Sodium azide
Stabilizer	Sucrose
Concentration	0.1 mg/ml
Storage instruction	Aliquot and store in the dark at 2-8°C. Keep protected from prolonged exposure to light. Avoid

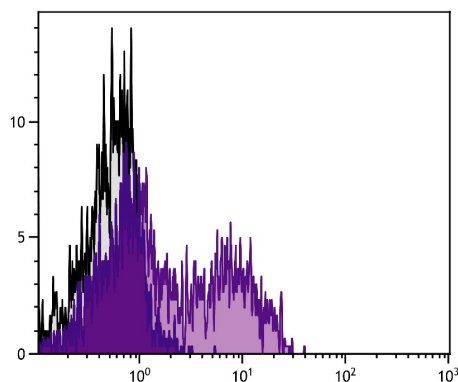
repeated freeze/thaw cycles. Suggest spin the vial prior to opening. The antibody solution should be gently mixed before use.

**Note** For laboratory research only, not for drug, diagnostic or other use.

## Bioinformation

Database links	<a href="#">GeneID: 10219 Human</a> <a href="#">GeneID: 50928 Mouse</a> <a href="#">Swiss-port # O88713 Mouse</a> <a href="#">Swiss-port # Q96E93 Human</a>
Gene Symbol	KLRG1
Gene Full Name	killer cell lectin-like receptor subfamily G, member 1
Background	Natural killer (NK) cells are lymphocytes that can mediate lysis of certain tumor cells and virus-infected cells without previous activation. They can also regulate specific humoral and cell-mediated immunity. The protein encoded by this gene belongs to the killer cell lectin-like receptor (KLR) family, which is a group of transmembrane proteins preferentially expressed in NK cells. Studies in mice suggested that the expression of this gene may be regulated by MHC class I molecules. Alternatively spliced transcript variants have been reported, but their full-length natures have not yet been determined. [provided by RefSeq, Jul 2008]
Function	Plays an inhibitory role on natural killer (NK) cells and T-cell functions upon binding to their non-MHC ligands. May mediate missing self recognition by binding to a highly conserved site on classical cadherins, enabling it to monitor expression of E-cadherin/CDH1, N-cadherin/CDH2 and R-cadherin/CDH4 on target cells. [UniProt]
Calculated Mw	22 kDa

## Images



ARG21035 anti-KLRG1 antibody [2F1] (PE) FACS image

Flow Cytometry: C57BL/6 Mouse splenocytes stained with [ARG21035](#) anti-KLRG1 antibody [2F1] (PE), [ARG22072](#) anti-NK1.1 / CD161bc antibody [PK136] (FITC), and [ARG20821](#) anti-CD3e antibody [C363.29B] (Spectral Red).