

ARG20959 anti-CD62E / E-Selectin antibody [1.2B6] (PE)

Package: 50 tests
Store at: 4°C

Summary

Product Description	PE-conjugated Mouse Monoclonal antibody [1.2B6] recognizes CD62E / E-Selectin
Tested Reactivity	Hu, Pig
Tested Application	BL, ELISA, FACS, ICC/IF, IHC-Fr, WB
Specificity	Human CD62E & CD62P/Porcine CD62E. The clone 1.2B6 recognizes a common epitope shared by CD62E and CD62P.
Host	Mouse
Clonality	Monoclonal
Clone	1.2B6
Isotype	IgG1, kappa
Target Name	CD62E / E-Selectin
Species	Human
Immunogen	TNF stimulated human endothelial cells
Conjugation	PE
Alternate Names	E-selectin; CD62E; ELAM-1; ELAM1; CD antigen CD62E; ELAM; Endothelial leukocyte adhesion molecule 1; Leukocyte-endothelial cell adhesion molecule 2; ESEL; LECAM2; CD62 antigen-like family member E

Application Instructions

Application table	Application	Dilution
	BL	Assay-dependent
	ELISA	Assay-dependent
	FACS	10 µl/10 ⁶ cells
	ICC/IF	Assay-dependent
	IHC-Fr	Assay-dependent
	WB	Assay-dependent
	Application Note WB: Under non-reducing condition. * The dilutions indicate recommended starting dilutions and the optimal dilutions or concentrations should be determined by the scientist.	

Properties

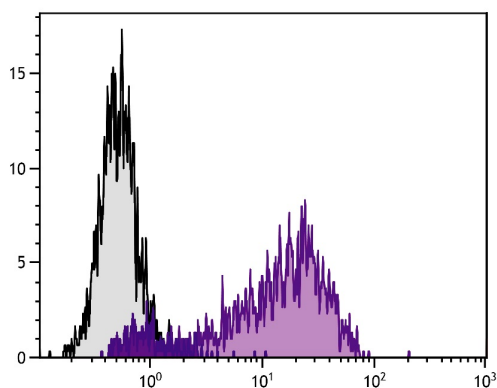
Form	Liquid
Buffer	PBS, 0.1% Sodium azide and Sucrose.
Preservative	0.1% Sodium azide

Stabilizer	Sucrose
Storage instruction	Aliquot and store in the dark at 2-8°C. Keep protected from prolonged exposure to light. Avoid repeated freeze/thaw cycles. Suggest spin the vial prior to opening. The antibody solution should be gently mixed before use.
Note	For laboratory research only, not for drug, diagnostic or other use.

Bioinformation

Database links	GeneID: 397508 Pig GeneID: 6401 Human Swiss-port # P16581 Human Swiss-port # P98110 Pig
Gene Symbol	SELE
Gene Full Name	selectin E
Background	The protein encoded by this gene is found in cytokine-stimulated endothelial cells and is thought to be responsible for the accumulation of blood leukocytes at sites of inflammation by mediating the adhesion of cells to the vascular lining. It exhibits structural features such as the presence of lectin- and EGF-like domains followed by short consensus repeat (SCR) domains that contain 6 conserved cysteine residues. These proteins are part of the selectin family of cell adhesion molecules. Adhesion molecules participate in the interaction between leukocytes and the endothelium and appear to be involved in the pathogenesis of atherosclerosis. [provided by RefSeq, Jul 2008]
Function	Cell-surface glycoprotein having a role in immunoadhesion. Mediates in the adhesion of blood neutrophils in cytokine-activated endothelium through interaction with PSGL1/SELPLG. May have a role in capillary morphogenesis. [UniProt]
Calculated Mw	67 kDa

Images



ARG20959 anti-CD62E / E-Selectin antibody [1.2B6] (PE) FACS image

Flow Cytometry: PMA and Ionomycin-stimulated human endothelial cell line HUV-EC-C stained with ARG20959 anti-CD62E / E-Selectin antibody [1.2B6] (PE).