

## ARG20884 anti-CD25 antibody [7D4] (PE-Cyanine 5)

Package: 50 µg  
Store at: 4°C

### Summary

Product Description	PE-Cyanine 5-conjugated Rat Monoclonal antibody [7D4] recognizes CD25
Tested Reactivity	Ms
Tested Application	BL, Depletion, FACS, IHC-Fr, Neut
Specificity	Mouse CD25. The clone 7D4 reacts with an epitope between amino acids 125 and 212 that is distinct from that recognized by The clone 3C7. While The clone 7D4 does not block the binding of IL-2 to CD25, when used in combination with The clone 3C7 it results in higher levels of inhibition of IL-2-driven proliferation than either of these two monoclonal antibodies alone.
Host	Rat
Clonality	Monoclonal
Clone	7D4
Isotype	IgM, kappa
Target Name	CD25
Species	Mouse
Immunogen	IL-2 dependent BALB/c helper T cell clone HT2
Conjugation	PE-Cyanine 5
Alternate Names	IL-2-RA; IL-2 receptor subunit alpha; CD25; TCGFR; TAC antigen; IL2R; CD antigen CD25; Interleukin-2 receptor subunit alpha; IL-2R subunit alpha; p55; IL2-RA; IDDM10

### Application Instructions

Application table	Application	Dilution
	BL	Assay-dependent
	Depletion	Assay-dependent
	FACS	< 0.2 µg/10 <sup>6</sup> cells
	IHC-Fr	Assay-dependent
	Neut	Assay-dependent
Application Note	* The dilutions indicate recommended starting dilutions and the optimal dilutions or concentrations should be determined by the scientist.	

### Properties

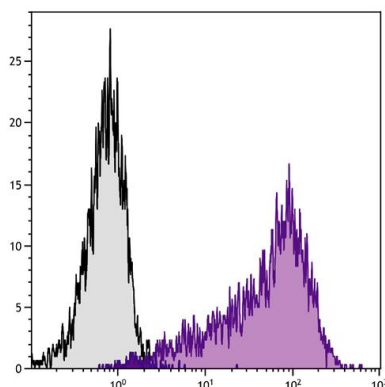
Form	Liquid
Buffer	PBS, 0.1% Sodium azide and Sucrose.
Preservative	0.1% Sodium azide

Stabilizer	Sucrose
Concentration	0.1 mg/ml
Storage instruction	Aliquot and store in the dark at 2-8°C. Keep protected from prolonged exposure to light. Avoid repeated freeze/thaw cycles. Suggest spin the vial prior to opening. The antibody solution should be gently mixed before use.
Note	For laboratory research only, not for drug, diagnostic or other use.

## Bioinformation

Database links	<a href="#">GeneID: 16184 Mouse</a> <a href="#">Swiss-port # P01590 Mouse</a>
Gene Symbol	IL2RA
Gene Full Name	interleukin 2 receptor, alpha chain
Background	The interleukin 2 (IL2) receptor alpha (IL2RA) and beta (IL2RB) chains, together with the common gamma chain (IL2RG), constitute the high-affinity IL2 receptor. Homodimeric alpha chains (IL2RA) result in low-affinity receptor, while homodimeric beta (IL2RB) chains produce a medium-affinity receptor. Normally an integral-membrane protein, soluble IL2RA has been isolated and determined to result from extracellular proteolysis. Alternately-spliced IL2RA mRNAs have been isolated, but the significance of each is presently unknown. Mutations in this gene are associated with interleukin 2 receptor alpha deficiency.[provided by RefSeq, Nov 2009]
Function	Receptor for interleukin-2. [UniProt]
Research Area	Immune System antibody; Pre-B Cell Marker antibody
Calculated Mw	31 kDa

## Images



ARG20884 anti-CD25 antibody [7D4] (PE-Cyanine 5) FACS image

Flow Cytometry: Con-A stimulated BALB/c Mouse splenocytes stained with ARG20884 anti-CD25 antibody [7D4] (PE-Cyanine 5).