

## ARG20701 Rat IgG2a Isotype Control antibody [KLH/G2a-1-1]

Package: 100 µg  
Store at: -20°C

### Summary

Product Description	Rat Monoclonal antibody [KLH/G2a-1-1] as a negative control antibody for Rat IgG2a
Tested Application	BL, ELISA, FACS, FLISA, IHC-Fr, IHC-P, IP
Specificity	KLH
Host	Rat
Clonality	Monoclonal
Clone	KLH/G2a-1-1
Isotype	IgG2a, kappa
Target Name	Rat IgG2a
Conjugation	Un-conjugated

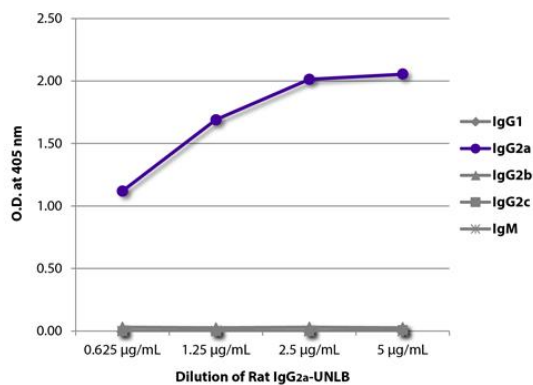
### Application Instructions

Application table	Application	Dilution
	BL	Assay-dependent
	ELISA	Assay-dependent
	FACS	Assay-dependent
	FLISA	Assay-dependent
	IHC-Fr	Assay-dependent
	IHC-P	Assay-dependent
	IP	Assay-dependent

**Application Note** \* The dilutions indicate recommended starting dilutions and the optimal dilutions or concentrations should be determined by the scientist.

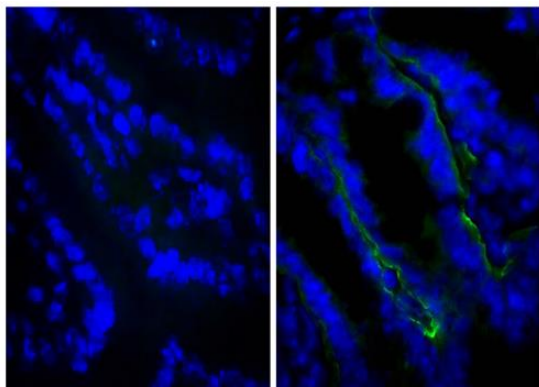
### Properties

Form	Liquid
Purification	Purified
Buffer	BBS (pH 8.2)
Concentration	0.5 mg/ml
Storage instruction	For continuous use, store undiluted antibody at 2-8°C for up to a week. For long-term storage, aliquot and store at -20°C or below. Storage in frost free freezers is not recommended. Avoid repeated freeze/thaw cycles. Suggest spin the vial prior to opening. The antibody solution should be gently mixed before use.
Note	For laboratory research only, not for drug, diagnostic or other use.



ARG20701 Rat IgG2a Isotype Control antibody [KLH/G2a-1-1] ELISA image

ELISA: The plate was coated with serially diluted ARG20701 Rat IgG2a Isotype Control antibody [KLH/G2a-1-1]. Immunoglobulin was detected with Mouse anti-Rat IgG1 antibody (Biotin), [ARG21703](#) Mouse anti-Rat IgG2a antibody [2A8F4] (Biotin), [ARG21710](#) Mouse anti-Rat IgG2b antibody [2B10A8] (Biotin-maleimide), [ARG21715](#) Mouse anti-Rat IgG2c antibody [2C8F1] (Biotin), and [ARG23837](#) Mouse anti-Rat IgM antibody [M2A1] (Biotin) followed by [ARG23912](#) Streptavidin (HRP) and quantified.



ARG20701 Rat IgG2a Isotype Control antibody [KLH/G2a-1-1] control image

Control: Frozen section of BALB/c Mouse intestine tissue stained with ARG20701 Rat IgG2a Isotype Control antibody [KLH/G2a-1-1] (left) and [ARG21041](#) anti-CD104 / Integrin beta 4 antibody [346-11A] (right), followed by [ARG23770](#) Goat anti-Rat IgG (H+L) antibody (Biotin) (pre-adsorbed), Streptavidin (FITC) and DAPI.