

ARG20659 Goat IgG Isotype Control antibody (FITC)

Package: 100 tests
Store at: 4°C

Summary

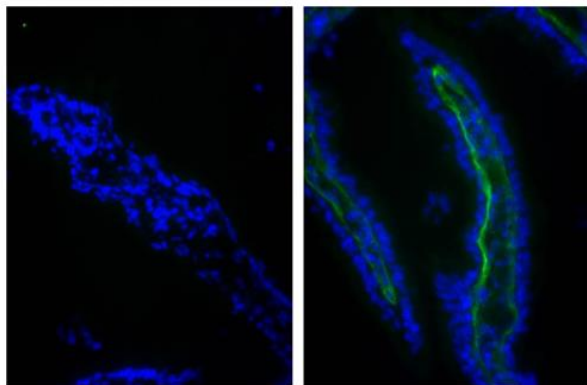
Product Description	FITC-conjugated Goat Polyclonal antibody as a negative control antibody for Goat IgG
Tested Application	BL, FACS, FLISA, IHC-Fr, IHC-P
Host	Goat
Clonality	Polyclonal
Isotype	IgG
Target Name	Goat IgG
Conjugation	FITC

Application Instructions

Application table	Application	Dilution
	BL	Assay-dependent
	FACS	10 µl/10 ⁶ cells
	FLISA	Assay-dependent
	IHC-Fr	Assay-dependent
	IHC-P	Assay-dependent
Application Note	* The dilutions indicate recommended starting dilutions and the optimal dilutions or concentrations should be determined by the scientist.	

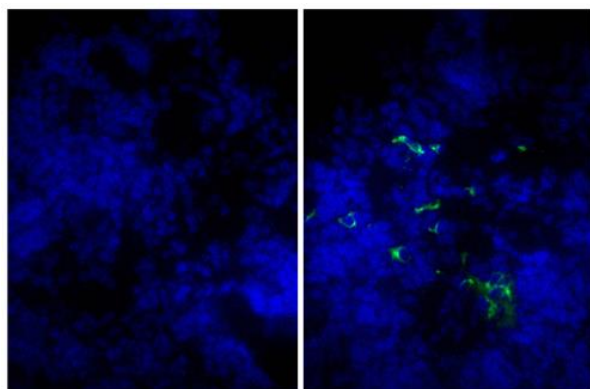
Properties

Form	Liquid
Buffer	PBS and 0.1% Sodium azide.
Preservative	0.1% Sodium azide
Storage instruction	Aliquot and store in the dark at 2-8°C. Keep protected from prolonged exposure to light. Avoid repeated freeze/thaw cycles. Suggest spin the vial prior to opening. The antibody solution should be gently mixed before use.
Note	For laboratory research only, not for drug, diagnostic or other use.



ARG20659 Goat IgG Isotype Control antibody (FITC) control image

Control: Frozen section of Chicken intestinal tissue stained with ARG20659 Goat IgG Isotype Control antibody (FITC) (left) and [ARG21966](#) anti-Collagen I antibody (FITC) (pre-adsorbed) (right) followed by DAPI.



ARG20659 Goat IgG Isotype Control antibody (FITC) control image

Control: Frozen section of Mouse lymph node tissue stained with ARG20659 Goat IgG Isotype Control antibody (FITC) (left) and [ARG21518](#) Goat anti-Mouse IgM antibody (FITC) (pre-adsorbed) (right) followed by DAPI.