

ARG20530 anti-BiP / GRP78 antibody

Package: 50 µg
Store at: -20°C

Summary

Product Description	Rabbit Polyclonal antibody recognizes BiP / GRP78
Tested Reactivity	Hu, Ms, Rat, Dm, Dog
Predict Reactivity	Rat
Tested Application	ELISA, ICC/IF, IHC-P, WB
Host	Rabbit
Clonality	Polyclonal
Target Name	BiP / GRP78
Species	Human
Immunogen	Full length of Human BiP / GRP78 with His tagged at the N-terminus.
Conjugation	Un-conjugated
Alternate Names	Heat shock 70 kDa protein 5; BiP; GRP-78; Endoplasmic reticulum luminal Ca; MIF2; 78 kDa glucose-regulated protein; GRP78; Immunoglobulin heavy chain-binding protein; HEL-S-89n; BIP; 2+

Application Instructions

Application table	Application	Dilution
	ELISA	Assay-dependent
	ICC/IF	1:100
	IHC-P	Assay-dependent
	WB	1:2000
Application Note	* The dilutions indicate recommended starting dilutions and the optimal dilutions or concentrations should be determined by the scientist.	

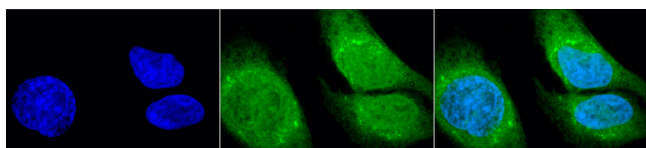
Properties

Form	Liquid
Purification	Purification with Protein A.
Buffer	PBS, 0.09% Sodium azide and 50% Glycerol
Preservative	0.09% Sodium azide
Stabilizer	50% Glycerol
Concentration	1 mg/ml
Storage instruction	For continuous use, store undiluted antibody at 2-8°C for up to a week. For long-term storage, aliquot and store at -20°C. Storage in frost free freezers is not recommended. Avoid repeated freeze/thaw cycles. Suggest spin the vial prior to opening. The antibody solution should be gently mixed before use.

Bioinformation

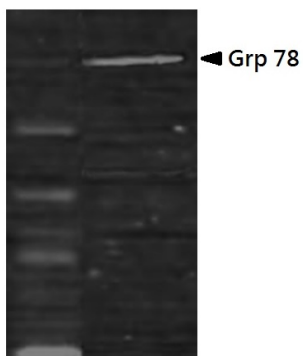
Gene Symbol	HSPA5
Gene Full Name	heat shock 70kDa protein 5 (glucose-regulated protein, 78kDa)
Background	The protein encoded by this gene is a member of the heat shock protein 70 (HSP70) family. It is localized in the lumen of the endoplasmic reticulum (ER), and is involved in the folding and assembly of proteins in the ER. As this protein interacts with many ER proteins, it may play a key role in monitoring protein transport through the cell.[provided by RefSeq, Sep 2010]
Function	Probably plays a role in facilitating the assembly of multimeric protein complexes inside the endoplasmic reticulum. Involved in the correct folding of proteins and degradation of misfolded proteins via its interaction with DNAJC10, probably to facilitate the release of DNAJC10 from its substrate. [UniProt]
Research Area	Controls and Markers antibody; ER Marker antibody; Endoplasmic reticulum antibody
Calculated Mw	72 kDa

Images



ARG20530 anti-BiP / GRP78 antibody ICC/IF image

Immunofluorescence: Heat Shocked (42°C for 1 hour) HeLa cells. Fixation: 2% Formaldehyde for 20 min at RT. Primary Antibody: ARG20530 anti-BiP / GRP78 antibody at 1:100 for 12 hours at 4°C. Secondary Antibody: FITC Goat anti-Rabbit (green) at 1:200 for 2 hours at RT. Counterstain: DAPI (blue) nuclear stain at 1:40000 for 2 hours at RT. Magnification: 100x. Left: DAPI (blue) nuclear stain. Middle: ARG20530 anti-BiP / GRP78 antibody. Right: Composite.



ARG20530 anti-BiP / GRP78 antibody WB image

Western blot: Glia GD cell lysates stained with ARG20530 anti-BiP / GRP78 antibody at 1:1000 dilution.