

ARG11111 anti-Calbindin antibody

Package: 50 µl
Store at: -20°C

Summary

Product Description	Chicken Polyclonal antibody recognizes Calbindin
Tested Reactivity	Hu, Ms, Rat, Cow, Pig
Tested Application	ICC/IF, IHC-Fr, WB
Host	Chicken
Clonality	Polyclonal
Isotype	IgY
Target Name	Calbindin
Species	Human
Immunogen	Recombinant full-length Human Calbindin.
Conjugation	Un-conjugated
Alternate Names	Vitamin D-dependent calcium-binding protein, avian-type; Calbindin; CALB; Calbindin D28; D-28K

Application Instructions

Application table	Application	Dilution
	ICC/IF	1:1000 - 1:5000
	IHC-Fr	1:1000 - 1:5000
	WB	1:5000
Application Note	* The dilutions indicate recommended starting dilutions and the optimal dilutions or concentrations should be determined by the scientist.	
Observed Size	30 or 26 kDa	

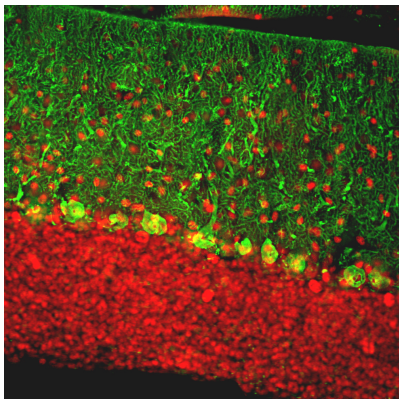
Properties

Form	Liquid
Buffer	PBS and 5 mM Sodium azide.
Preservative	5 mM Sodium azide
Storage instruction	For continuous use, store undiluted antibody at 2-8°C for up to a week. For long-term storage, aliquot and store at -20°C or below. Storage in frost free freezers is not recommended. Avoid repeated freeze/thaw cycles. Suggest spin the vial prior to opening. The antibody solution should be gently mixed before use.
Note	For laboratory research only, not for drug, diagnostic or other use.

Bioinformation

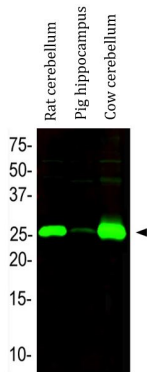
Gene Symbol	CALB1
Gene Full Name	calbindin 1, 28kDa
Background	The protein encoded by this gene is a member of the calcium-binding protein superfamily that includes calmodulin and troponin C. Originally described as a 27 kDa protein, it is now known to be a 28 kDa protein. It contains four active calcium-binding domains, and has two modified domains that are thought to have lost their calcium binding capability. This protein is thought to buffer entry of calcium upon stimulation of glutamate receptors. Depletion of this protein was noted in patients with Huntington disease. [provided by RefSeq, Jan 2015]
Function	Buffers cytosolic calcium. May stimulate a membrane Ca(2+)-ATPase and a 3',5'-cyclic nucleotide phosphodiesterase. [UniProt]
Calculated Mw	30 kDa

Images



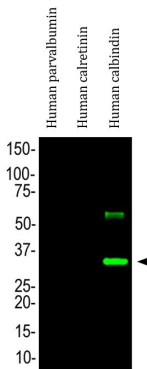
ARG11111 anti-Calbindin antibody IHC-Fr image

Immunohistochemistry: Frozen section of Rat cerebellum tissue stained with ARG11111 anti-Calbindin antibody (green) at 1:2000 dilution, and costained with [ARG10737](#) anti-MeCP2 antibody (red) at 1:5000 dilution. (Sample preparation: Following transcardial perfusion with 4% paraformaldehyde, brain was post fixed for 24 hours, cut to 45 μM, and free-floating sections were stained with above antibodies.).



ARG11111 anti-Calbindin antibody WB image

Western blot: Rat cerebellum, Pig hippocampus and Cow cerebellum lysates stained with ARG11111 anti-Calbindin antibody at 1:5000 dilution.



ARG11111 anti-Calbindin antibody WB image

Western blot: Full length recombinant Human parvalbumin, calretinin and calbindin proteins stained with ARG11111 anti-Calbindin antibody at 1:5000 dilution.