

ARG11098 Goat anti-Human IgG antibody (HRP), pre-adsorbed

Package: 250 µl
Store at: 4°C

Summary

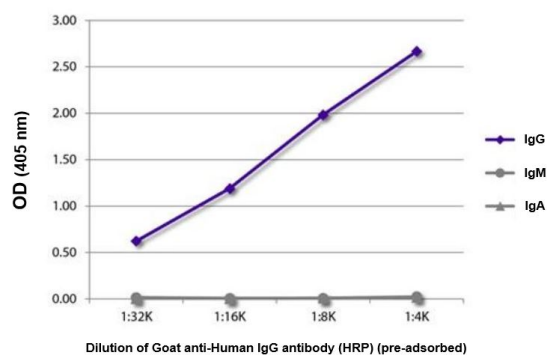
Product Description	HRP-conjugated Goat Polyclonal antibody recognizes Human IgG
Tested Reactivity	Hu
Species Does Not React With	R. Mk
Tested Application	ELISA, IP
Specificity	The antibody reacts with the heavy chain of Human IgG. The antibody is pre-adsorbed with Human IgM, Human IgA, Rhesus (<i>Macaca mulatta</i>) and Cynomolgus (<i>Macaca fascicularis</i>) IgG, so the antibody may not react with these immunoglobulins, but may react with immunoglobulins from other species.
Host	Goat
Clonality	Polyclonal
Isotype	IgG
Target Name	IgG
Species	Human
Immunogen	Human IgG
Conjugation	HRP

Application Instructions

Pre Adsorbed	Human IgM, Human IgA, Rhesus (<i>Macaca mulatta</i>) and Cynomolgus (<i>Macaca fascicularis</i>) IgG	
Application table	Application	Dilution
	ELISA	1:4000 - 1:8000
	IP	Assay-dependent
Application Note	* The dilutions indicate recommended starting dilutions and the optimal dilutions or concentrations should be determined by the scientist.	

Properties

Form	Liquid
Purification	Affinity purification with immunogen.
Buffer	PBS (pH 7.4) and 50% Glycerol.
Stabilizer	50% Glycerol
Storage instruction	Aliquot and store in the dark at 2-8°C. Keep protected from prolonged exposure to light. Avoid repeated freeze/thaw cycles. Suggest spin the vial prior to opening. The antibody solution should be gently mixed before use.
Note	For laboratory research only, not for drug, diagnostic or other use.



ARG11098 Goat anti-Human IgG antibody (HRP) (pre-adsorbed)
ELISA image

ELISA: The plate was coated with purified Human IgG, IgM and IgA. Immunoglobulins were stained with serially diluted ARG11098 Goat anti-Human IgG antibody (HRP) (pre-adsorbed).