

ARG11060 anti-SCGN / Secretagogen antibody

Package: 50 µl
Store at: -20°C

Summary

Product Description	Chicken Polyclonal antibody recognizes SCGN / Secretagogen
Tested Reactivity	Hu, Ms, Rat, Cow
Tested Application	IHC-Fr, WB
Host	Chicken
Clonality	Polyclonal
Isotype	IgY
Target Name	SCGN / Secretagogen
Species	Human
Immunogen	Full-length recombinant Human Secretagogen protein.
Conjugation	Un-conjugated
Alternate Names	SEGN; DJ501N12.8; setagin; SECRET; CALBL; Secretagogen

Application Instructions

Application table	Application	Dilution
	IHC-Fr	1:1000 - 1:2000
	WB	1:1000 - 1:5000
Application Note	* The dilutions indicate recommended starting dilutions and the optimal dilutions or concentrations should be determined by the scientist.	
Observed Size	~ 27 kDa	

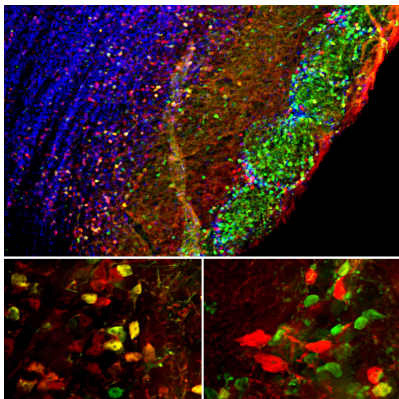
Properties

Form	Liquid
Purification	Purified
Buffer	PBS, 5mM Sodium azide and 50% Glycerol.
Preservative	5mM Sodium azide
Stabilizer	50% Glycerol
Concentration	1 mg/ml
Storage instruction	For continuous use, store undiluted antibody at 2-8°C for up to a week. For long-term storage, aliquot and store at -20°C. Storage in frost free freezers is not recommended. Avoid repeated freeze/thaw cycles. Suggest spin the vial prior to opening. The antibody solution should be gently mixed before use.
Note	For laboratory research only, not for drug, diagnostic or other use.

Bioinformation

Gene Symbol	SCGN
Gene Full Name	secretagogin, EF-hand calcium binding protein
Background	The encoded protein is a secreted calcium-binding protein which is found in the cytoplasm. It is related to calbindin D-28K and calretinin. This protein is thought to be involved in KCL-stimulated calcium flux and cell proliferation. [provided by RefSeq, Jul 2008]
Calculated Mw	32 kDa

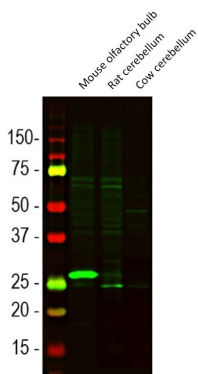
Images



ARG11060 anti-SCGN / Secretagogin antibody IHC-Fr image

Immunohistochemistry: Mouse brain olfactory bulb section stained with ARG11060 anti-SCGN / Secretagogin antibody (red) at 1:1000 dilution, and costained with mouse mAb to calretinin (green) at 1:500 dilution. The blue is Hoechst staining of nuclear DNA. Following transcardial perfusion with 4% paraformaldehyde, brain was post fixed for 24 hours, cut to 45 μ M, and free-floating sections were stained with the above antibodies.

Secretagogin is highly expressed in the mitral and granular cell layers, while calretinin is in the glomerular layer. Cells that express secretagogin or calretinin only are red or green respectively. A number of cells containing both proteins appears orange-yellow. Mouse select image at left for larger view.



ARG11060 anti-SCGN / Secretagogin antibody WB image

Western blot: Mouse olfactory bulb, Rat cerebellum and Cow cerebellum lysates stained with ARG11060 anti-SCGN / Secretagogin antibody at 1:1000 dilution.