

## ARG11050 anti-S100A7 / Psoriasin antibody [2A3]

Package: 100 µg  
Store at: -20°C

### Summary

Product Description	Mouse Monoclonal antibody [2A3] recognizes S100A7 / Psoriasin
Tested Reactivity	Hu
Tested Application	IHC-P
Specificity	This antibody is reactive to S100A7 peptide (TDYHKQSHGAAPCSGGS) and GST tagged recombinant S100A7 .
Host	Mouse
Clonality	Monoclonal
Clone	2A3
Isotype	IgG1, kappa
Target Name	S100A7 / Psoriasin
Species	Human
Immunogen	KLH-conjugated synthetic peptide of Human S100A7. (TDYHKQSHGAAPCSGGS)
Conjugation	Un-conjugated
Alternate Names	S100A7c; S100 calcium-binding protein A7; PSOR1; Psoriasin; Protein S100-A7

### Application Instructions

Application table	Application	Dilution
	IHC-P	20 µg/ml
Application Note	IHC-P: Antigen retrieval: Heat induced. * The dilutions indicate recommended starting dilutions and the optimal dilutions or concentrations should be determined by the scientist.	

### Properties

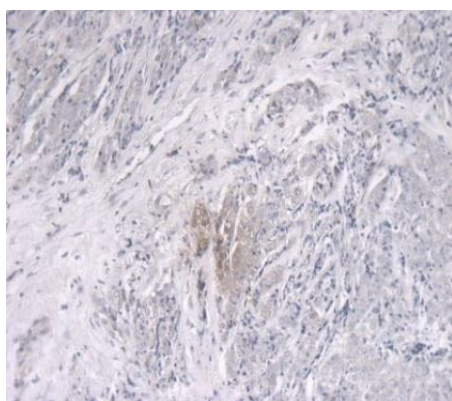
Form	Liquid
Purification	Purification with Protein G.
Buffer	PBS (pH 7.0)
Storage instruction	For continuous use, store undiluted antibody at 2-8°C for up to a week. For long-term storage, aliquot and store at -20°C or below. Storage in frost free freezers is not recommended. Avoid repeated freeze/thaw cycles. Suggest spin the vial prior to opening. The antibody solution should be gently mixed before use.
Note	For laboratory research only, not for drug, diagnostic or other use.

### Bioinformation

Gene Symbol	S100A7
Gene Full Name	S100 calcium binding protein A7
Background	The protein encoded by this gene is a member of the S100 family of proteins containing 2 EF-hand calcium-binding motifs. S100 proteins are localized in the cytoplasm and/or nucleus of a wide range of cells, and involved in the regulation of a number of cellular processes such as cell cycle progression and differentiation. S100 genes include at least 13 members which are located as a cluster on chromosome 1q21. This protein differs from the other S100 proteins of known structure in its lack of calcium binding ability in one EF-hand at the N-terminus. The protein is overexpressed in hyperproliferative skin diseases, exhibits antimicrobial activities against bacteria and induces immunomodulatory activities. [provided by RefSeq, Nov 2014]
Calculated Mw	11 kDa

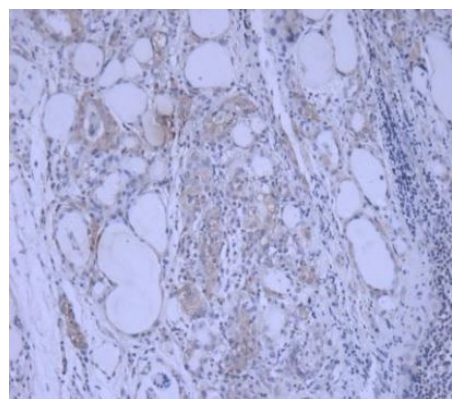
## Images

---



ARG11050 anti-S100A7 / Psoriasin antibody [2A3] IHC-P image

Immunohistochemistry: Paraffin-embedded Human breast cancer tissue stained with ARG11050 anti-S100A7 / Psoriasin antibody [2A3] at 20 µg/ml dilution. Antigen retrieval: Heat induced.



ARG11050 anti-S100A7 / Psoriasin antibody [2A3] IHC-P image

Immunohistochemistry: Paraffin-embedded Human thyroid cancer tissue stained with ARG11050 anti-S100A7 / Psoriasin antibody [2A3] at 20 µg/ml dilution. Antigen retrieval: Heat induced.