

ARG10841 anti-BMP2 antibody

Package: 50 µg
Store at: -20°C

Summary

Product Description	Rabbit Polyclonal antibody recognizes BMP2
Tested Reactivity	Hu, Ms, Rat, Mk
Tested Application	ICC/IF, IHC-Fr, IHC-P, WB
Host	Rabbit
Clonality	Polyclonal
Isotype	IgG
Target Name	BMP2
Species	Mouse
Immunogen	KLH-conjugated synthetic peptide around aa. 45-60 of Mouse BMP2.
Conjugation	Un-conjugated
Alternate Names	BDA2; BMP2A; BMP-2; Bone morphogenetic protein 2A; Bone morphogenetic protein 2; BMP-2A

Application Instructions

Application table	Application	Dilution
	ICC/IF	1:200-1:500
	IHC-Fr	1:200 - 1:500
	IHC-P	1:200 - 1:500
	WB	1:500 - 1:1000
Application Note	* The dilutions indicate recommended starting dilutions and the optimal dilutions or concentrations should be determined by the scientist.	

Properties

Form	Liquid
Purification	Affinity purified.
Buffer	Tris, HCl / Glycine buffer (pH 7.4 - 7.8), cryo-protective agents, Hepes, 0.02% sodium azide, 30% Glycerol and 0.5% BSA.
Preservative	0.02% sodium azide
Stabilizer	30% Glycerol and 0.5% BSA
Concentration	0.5 mg/ml
Storage instruction	For continuous use, store undiluted antibody at 2-8°C for up to a week. For long-term storage, aliquot and store at -20°C. Storage in frost free freezers is not recommended. Avoid repeated freeze/thaw cycles. Suggest spin the vial prior to opening. The antibody solution should be gently mixed before use.

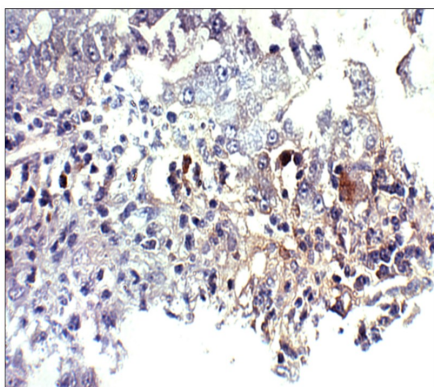
Note

For laboratory research only, not for drug, diagnostic or other use.

Bioinformation

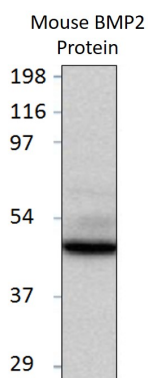
Gene Symbol	Bmp2
Gene Full Name	bone morphogenetic protein 2
Background	The protein encoded by this gene belongs to the transforming growth factor-beta (TGFB) superfamily. The encoded protein acts as a disulfide-linked homodimer and induces bone and cartilage formation. [provided by RefSeq, Jul 2008]
Function	Induces cartilage and bone formation. [UniProt]
Calculated Mw	45 kDa

Images



ARG10841 anti-BMP2 antibody IHC-P image

Immunohistochemistry: Formalin-fixed and paraffin-embedded Baboon liver stained with ARG10841 anti-BMP2 antibody at 1:100 dilution. 40X magnification.



ARG10841 anti-BMP2 antibody WB image

Western blot: Purified Mouse BMP2 Protein stained with ARG10841 anti-BMP2 antibody at 1:500 dilution.