

## ARG10822 anti-IL2 Receptor beta antibody

Package: 50 µg  
Store at: -20°C

### Summary

Product Description	Rabbit Polyclonal antibody recognizes IL2 Receptor beta
Tested Reactivity	Ms
Tested Application	WB
Host	Rabbit
Clonality	Polyclonal
Isotype	IgG
Target Name	IL2 Receptor beta
Species	Mouse
Immunogen	Synthetic peptide of Mouse IL2 Receptor beta. (NLHGQDQDRGQGPILTNTDAYLSLQELQAQDSVHLI)
Conjugation	Un-conjugated
Alternate Names	P70-75; IL-2RB; IL-2 receptor subunit beta; p75; Interleukin-2 receptor subunit beta; CD122; CD antigen CD122; High affinity IL-2 receptor subunit beta; IL-2R subunit beta; p70-75; IL15RB

### Application Instructions

Application table	Application	Dilution
	WB	0.1 - 0.5 µg/ml
Application Note	* The dilutions indicate recommended starting dilutions and the optimal dilutions or concentrations should be determined by the scientist.	

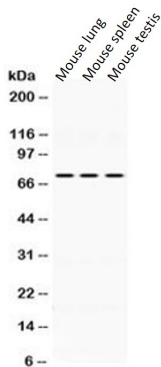
### Properties

Form	Liquid
Purification	Affinity purification with immunogen.
Buffer	PBS, 0.025% Sodium azide and 2.5% BSA.
Preservative	0.025% Sodium azide
Stabilizer	2.5% BSA
Concentration	0.5 mg/ml
Storage instruction	For continuous use, store undiluted antibody at 2-8°C for up to a week. For long-term storage, aliquot and store at -20°C or below. Storage in frost free freezers is not recommended. Avoid repeated freeze/thaw cycles. Suggest spin the vial prior to opening. The antibody solution should be gently mixed before use.
Note	For laboratory research only, not for drug, diagnostic or other use.

Bioinformation

Gene Symbol	Il2rb
Gene Full Name	interleukin 2 receptor, beta chain
Background	The interleukin 2 receptor, which is involved in T cell-mediated immune responses, is present in 3 forms with respect to ability to bind interleukin 2. The low affinity form is a monomer of the alpha subunit and is not involved in signal transduction. The intermediate affinity form consists of an alpha/beta subunit heterodimer, while the high affinity form consists of an alpha/beta/gamma subunit heterotrimer. Both the intermediate and high affinity forms of the receptor are involved in receptor-mediated endocytosis and transduction of mitogenic signals from interleukin 2. The protein encoded by this gene represents the beta subunit and is a type I membrane protein. [provided by RefSeq, Jul 2008]
Function	Receptor for interleukin-2. This beta subunit is involved in receptor mediated endocytosis and transduces the mitogenic signals of IL2. [UniProt]
Calculated Mw	61 kDa (unmodified); 70 - 75 kDa (glycosylated)

Images



ARG10822 anti-IL2 Receptor beta antibody WB image

Western blot: Mouse lung, Mouse spleen, and Mouse testis lysates stained with ARG10822 anti-IL2 Receptor beta antibody.