

ARG10810 anti-PDE8A antibody

Package: 50 µg
Store at: -20°C

Summary

Product Description	Rabbit Polyclonal antibody recognizes PDE8A
Tested Reactivity	Hu, Ms, Rat, Bov, Mk
Tested Application	Confocal, Dot, ELISA, ICC/IF, IHC-P, IP, WB
Host	Rabbit
Clonality	Polyclonal
Isotype	IgG
Target Name	PDE8A
Species	Human
Immunogen	Synthetic cyclic peptide from near the N-terminus common to all PDE8A variants.
Conjugation	Un-conjugated
Alternate Names	HsT19550; High affinity cAMP-specific and IBMX-insensitive 3',5'-cyclic phosphodiesterase 8A; EC 3.1.4.53

Application Instructions

Application table	Application	Dilution
	Confocal	1:250
	Dot	1:10000
	ELISA	1:10000
	ICC/IF	1:250
	IHC-P	1:250
	IP	1:250
	WB	1:500 - 1:2000
	Application Note	* The dilutions indicate recommended starting dilutions and the optimal dilutions or concentrations should be determined by the scientist.

Properties

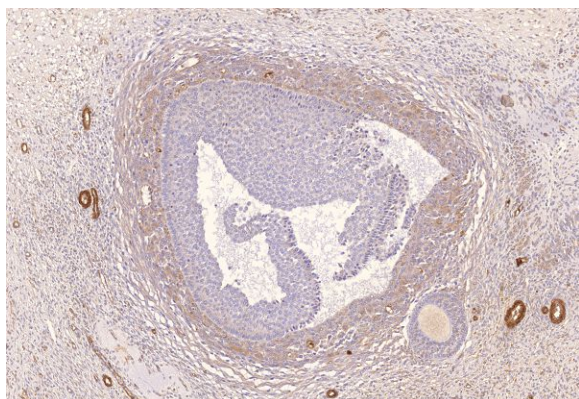
Form	Liquid
Purification	Affinity purified.
Buffer	Tris-Glycine Buffer (pH 7.4 - 7.8), Hepes, 0.02% Sodium azide, 30% Glycerol and 0.5% BSA.
Preservative	0.02% Sodium azide
Stabilizer	30% Glycerol and 0.5% BSA

Concentration	0.5 mg/ml
Storage instruction	For continuous use, store undiluted antibody at 2-8°C for up to a week. For long-term storage, aliquot and store at -20°C. Storage in frost free freezers is not recommended. Avoid repeated freeze/thaw cycles. Suggest spin the vial prior to opening. The antibody solution should be gently mixed before use.
Note	For laboratory research only, not for drug, diagnostic or other use.

Bioinformation

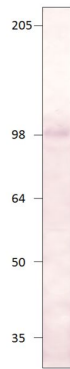
Database links	GeneID: 18584 Mouse GeneID: 5151 Human Swiss-port # O60658 Human Swiss-port # O88502 Mouse
Gene Symbol	PDE8A
Gene Full Name	phosphodiesterase 8A
Background	The protein encoded by this gene belongs to the cyclic nucleotide phosphodiesterase (PDE) family, and PDE8 subfamily. This PDE hydrolyzes the second messenger, cAMP, which is a regulator and mediator of a number of cellular responses to extracellular signals. Thus, by regulating the cellular concentration of cAMP, this protein plays a key role in many important physiological processes. Alternatively spliced transcript variants encoding different isoforms have been found for this gene.[provided by RefSeq, Jul 2011]
Function	Hydrolyzes the second messenger cAMP, which is a key regulator of many important physiological processes. May be involved in maintaining basal levels of the cyclic nucleotide and/or in the cAMP regulation of germ cell development. [UniProt]
Calculated Mw	93 kDa
PTM	Phosphorylated at Ser-359 by PKA under elevated cAMP conditions, this enhances catalytic activity.

Images



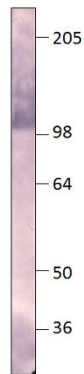
ARG10810 anti-PDE8A antibody IHC-P image

Immunohistochemistry: Paraffin-embedded Human ovarian medulla tissue stained with ARG10810 anti-PDE8A antibody at 1:200 dilution.



ARG10810 anti-PDE8A antibody WB image

Western blot: 50 µg of Rat heart tissue stained with ARG10810 anti-PDE8A antibody at 1:500 dilution.



ARG10810 anti-PDE8A antibody WB image

Western blot: Recombinant PDE8A protein stained with ARG10810 anti-PDE8A antibody at 1:500 dilution.