

ARG10780 anti-GLUT4 antibody

Package: 50 µg
Store at: -20°C

Summary

Product Description	Rabbit Polyclonal antibody recognizes GLUT4
Tested Reactivity	Hu, Ms, Rat
Tested Application	Confocal, Dot, ELISA, ICC/IF, IHC-P, IP, WB
Host	Rabbit
Clonality	Polyclonal
Isotype	IgG
Target Name	GLUT4
Species	Mouse
Immunogen	Synthetic peptide from Mouse Glut4.
Conjugation	Un-conjugated
Alternate Names	Glucose transporter type 4, insulin-responsive; GLUT4; GLUT-4; Solute carrier family 2, facilitated glucose transporter member 4

Application Instructions

Application table	Application	Dilution
	Confocal	1:200
	Dot	1:4000
	ELISA	1:4000
	ICC/IF	1:200
	IHC-P	1:200
	IP	1:200
	WB	1:1000
	Application Note * The dilutions indicate recommended starting dilutions and the optimal dilutions or concentrations should be determined by the scientist.	

Properties

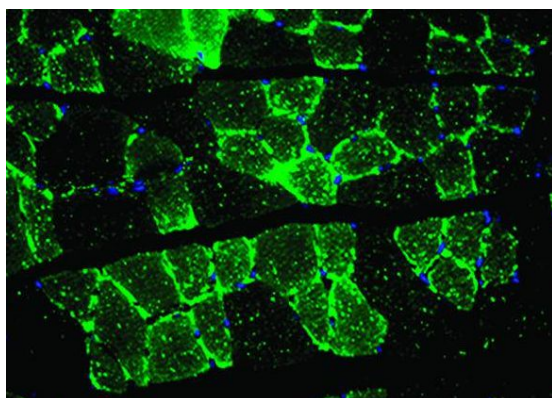
Form	Liquid
Purification	Affinity purified.
Buffer	Tris-Glycine Buffer (pH 7.4 - 7.8), Hepes, 0.02% Sodium azide, 30% Glycerol and 0.5% BSA.
Preservative	0.02% Sodium azide
Stabilizer	30% Glycerol and 0.5% BSA

Concentration	0.5 mg/ml
Storage instruction	For continuous use, store undiluted antibody at 2-8°C for up to a week. For long-term storage, aliquot and store at -20°C. Storage in frost free freezers is not recommended. Avoid repeated freeze/thaw cycles. Suggest spin the vial prior to opening. The antibody solution should be gently mixed before use.
Note	For laboratory research only, not for drug, diagnostic or other use.

Bioinformation

Gene Symbol	Slc2a4
Gene Full Name	solute carrier family 2 (facilitated glucose transporter), member 4
Background	This gene is a member of the solute carrier family 2 (facilitated glucose transporter) family and encodes a protein that functions as an insulin-regulated facilitative glucose transporter. In the absence of insulin, this integral membrane protein is sequestered within the cells of muscle and adipose tissue. Within minutes of insulin stimulation, the protein moves to the cell surface and begins to transport glucose across the cell membrane. Mutations in this gene have been associated with noninsulin-dependent diabetes mellitus (NIDDM). [provided by RefSeq, Jul 2008]
Function	Insulin-regulated facilitative glucose transporter. [UniProt]
Research Area	Cancer antibody; Cell Biology and Cellular Response antibody; Developmental Biology antibody; Metabolism antibody; Signaling Transduction antibody; Glucose uptake: Insulin Receptor Dependent Pathway Study antibody
Calculated Mw	55 kDa
PTM	Sumoylated.

Images



ARG10780 anti-GLUT4 antibody IHC image

Immunohistochemistry: Rat muscle stained with ARG10780 anti-GLUT4 antibody at 1:200 dilution.



ARG10780 anti-GLUT4 antibody WB image

Western blot: Recombinant Glut4 protein stained with ARG10780 anti-GLUT4 antibody at 1:500 dilution.