

**ARG10779**  
**anti-DRD2 / Dopamine Receptor D2 antibody**Package: 50 µg  
Store at: -20°C

### Summary

Product Description	Rabbit Polyclonal antibody recognizes DRD2 / Dopamine Receptor D2
Tested Reactivity	Ms, Rat
Tested Application	ELISA, ICC/IF, IHC-Fr, IP, WB
Host	Rabbit
Clonality	Polyclonal
Isotype	IgG
Target Name	DRD2 / Dopamine Receptor D2
Species	Rat
Immunogen	Synthetic peptide taken within aa. 150-200 from Rat DRD2 / Dopamine D2 receptor.
Conjugation	Un-conjugated
Alternate Names	D2R; D2DR; D(2) dopamine receptor; Dopamine D2 receptor

### Application Instructions

Application table	Application	Dilution
	ELISA	1:50000
	ICC/IF	1:200
	IHC-Fr	1:200
	IP	1:200
	WB	1:1000 - 1:15000

**Application Note** \* The dilutions indicate recommended starting dilutions and the optimal dilutions or concentrations should be determined by the scientist.

### Properties

Form	Liquid
Purification	Affinity purified.
Buffer	Tris-Glycine Buffer (pH 7.4 - 7.8), Hepes, 0.02% Sodium azide, 30% Glycerol and 0.5% BSA.
Preservative	0.02% Sodium azide
Stabilizer	30% Glycerol and 0.5% BSA
Concentration	0.75 mg/ml
Storage instruction	For continuous use, store undiluted antibody at 2-8°C for up to a week. For long-term storage, aliquot and store at -20°C. Storage in frost free freezers is not recommended. Avoid repeated freeze/thaw cycles. Suggest spin the vial prior to opening. The antibody solution should be gently mixed before use.

Note

For laboratory research only, not for drug, diagnostic or other use.

## Bioinformation

Database links

[GeneID: 13489 Mouse](#)

[GeneID: 24318 Rat](#)

[Swiss-port # P61168 Mouse](#)

[Swiss-port # P61169 Rat](#)

Gene Symbol

Drd2

Gene Full Name

dopamine receptor D2

Background

This gene encodes the D2 subtype of the dopamine receptor. This G-protein coupled receptor inhibits adenylyl cyclase activity. A missense mutation in this gene causes myoclonus dystonia; other mutations have been associated with schizophrenia. Alternative splicing of this gene results in two transcript variants encoding different isoforms. A third variant has been described, but it has not been determined whether this form is normal or due to aberrant splicing. [provided by RefSeq, Jul 2008]

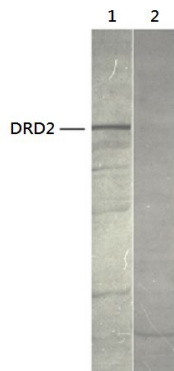
Function

Dopamine receptor whose activity is mediated by G proteins which inhibit adenylyl cyclase. [UniProt]

Calculated Mw

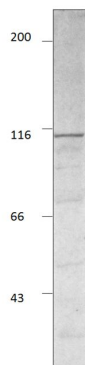
51 kDa

## Images



ARG10779 anti-DRD2 / Dopamine Receptor D2 antibody WB image

Western blot: 1) Recombinant Dopamine D2 receptor protein, and 2) cerebellar membranes stained with ARG10779 anti-DRD2 / Dopamine Receptor D2 antibody at 1:500 dilution.



ARG10779 anti-DRD2 / Dopamine Receptor D2 antibody WB image

Western blot: Rat striatal membranes stained with ARG10779 anti-DRD2 / Dopamine Receptor D2 antibody at 1:500 dilution.