

ARG10759 anti-mCherry antibody [1C51]

Package: 50 µl
Store at: -20°C

Summary

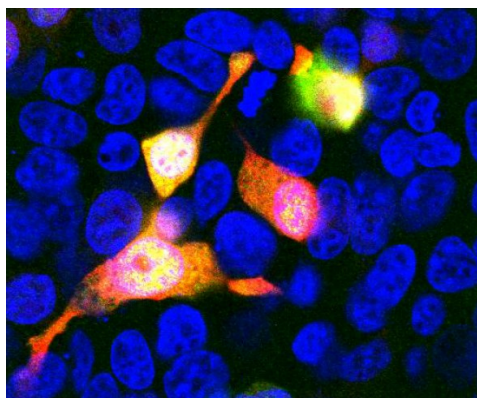
Product Description	Mouse Monoclonal Antibody to mCherry
Tested Reactivity	Other
Tested Application	ICC/IF, IHC-Fr, WB
Host	Mouse
Clonality	Monoclonal
Clone	1C51
Isotype	IgG2a
Target Name	mCherry
Species	Others
Immunogen	Full length recombinant protein.
Conjugation	Un-conjugated

Application Instructions

Application table	Application	Dilution
	ICC/IF	1:500
	IHC-Fr	1:500
	WB	1:2000
Application Note	* The dilutions indicate recommended starting dilutions and the optimal dilutions or concentrations should be determined by the scientist.	

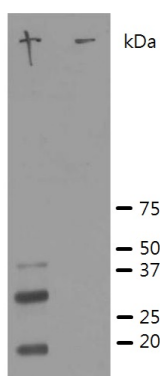
Properties

Form	Liquid
Purification	Affinity purification.
Buffer	PBS and 50% Glycerol.
Stabilizer	50% Glycerol
Concentration	1 mg/ml
Storage instruction	For continuous use, store undiluted antibody at 2-8°C for up to a week. For long-term storage, aliquot and store at -20°C. Storage in frost free freezers is not recommended. Avoid repeated freeze/thaw cycles. Suggest spin the vial prior to opening. The antibody solution should be gently mixed before use.
Note	For laboratory research only, not for drug, diagnostic or other use.



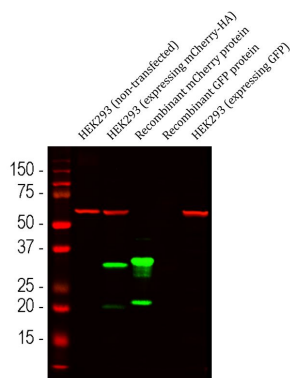
ARG10759 anti-mCherry antibody [1C51] ICC/IF image

Immunocytochemistry: HEK293 cells transfected with mCherry and visualized in red. The cells were stained with ARG10759 anti-mCherry antibody [1C51] in green, and visualized using a confocal microscope. Transfected cells are yellow, showing overlap of the mCherry and the ARG10759 anti-mCherry antibody [1C51]. Untransfected HEK293 cells do not express Cherry and do not stain with the antibody, but their nuclei can be visualized using a DNA stain (blue).



ARG10759 anti-mCherry antibody [1C51] WB image

Western blot: Crude extract of HEK293 cells transfected with pFin-EF1-mCherry vector in lane labelled "+". The "-" lane is a blot of an equal amount of protein extract from untransfected HEK293 cells. ARG10759 anti-mCherry antibody [1C51] binds a major band running at ~28 kDa corresponding to intact full-length mCherry. The two other bands are clearly processed forms of mCherry as they are not present in non-transfected HEK293 cells.



ARG10759 anti-mCherry antibody [1C51] WB image

Western blot: 1) HEK293 (non-transfected), 2) HEK293 transfected with mCherry-HA construct, 3) Recombinant mCherry protein, 4) Recombinant GFP protein and 5) HEK293 transfected with GFP construct. The blots were stained with ARG10759 anti-mCherry antibody [1C51] (green) at 1:1000 dilution. The same blot was simultaneously stained with [ARG10757](#) anti-Hsp 60 antibody (red) at 1:5000 dilution.