

ARG10758 anti-mCherry antibody

Package: 50 µl
Store at: -20°C

Summary

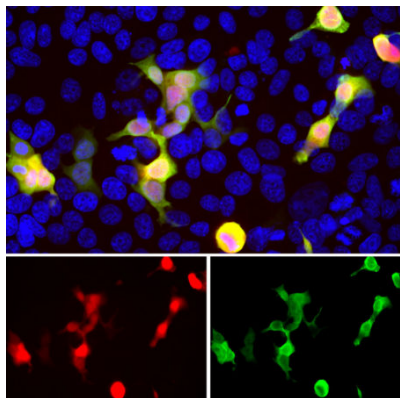
Product Description	Chicken Polyclonal Antibody to mCherry
Tested Reactivity	Other
Tested Application	ICC/IF, IHC-Fr, WB
Specificity	This antibody recognizes mCherry and tdTomato. It does not cross-react to GFP.
Host	Chicken
Clonality	Polyclonal
Isotype	IgY
Target Name	mCherry
Species	Others
Immunogen	Full length recombinant protein.
Conjugation	Un-conjugated

Application Instructions

Application table	Application	Dilution
	ICC/IF	1:1000
	IHC-Fr	1:1000
	WB	1:2000 - 1:5000
Application Note	* The dilutions indicate recommended starting dilutions and the optimal dilutions or concentrations should be determined by the scientist.	

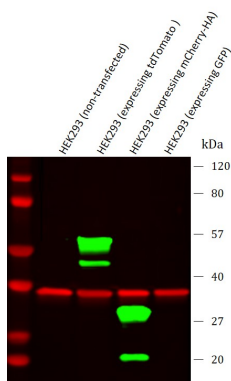
Properties

Form	Liquid
Buffer	PBS and 0.02% Sodium azide.
Preservative	0.02% Sodium azide
Storage instruction	For continuous use, store undiluted antibody at 2-8°C for up to a week. For long-term storage, aliquot and store at -20°C or below. Storage in frost free freezers is not recommended. Avoid repeated freeze/thaw cycles. Suggest spin the vial prior to opening. The antibody solution should be gently mixed before use.
Note	For laboratory research only, not for drug, diagnostic or other use.



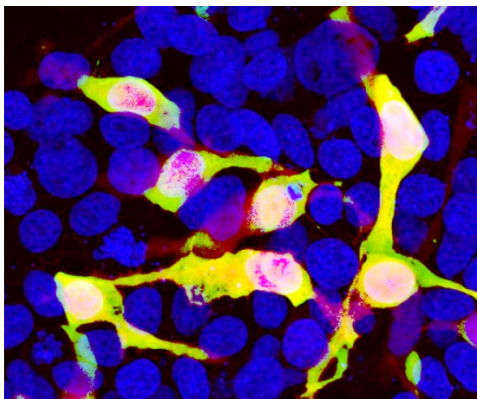
ARG10758 anti-mCherry antibody ICC/IF image

Immunofluorescence: HEK293 cells transfected with a mCherry (red). Cells were stained with ARG10758 anti-mCherry antibody (green). DNA staining (blue).



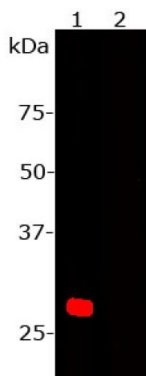
ARG10758 anti-mCherry antibody WB image

Western blot: 1) HEK293 (non-transfected), 2) HEK293 transfected with tdTomato construct, 3) HEK293 transfected with mCherry-HA construct, and 4) HEK293 transfected with GFP construct. The blots were stained with ARG10758 anti-mCherry antibody (green) at 1:2000 dilution. The same blot was simultaneously stained with Mouse mAb to GAPDH (red) at 1:2000 dilution.



ARG10758 anti-mCherry antibody ICC/IF image

Immunocytochemistry: HEK293 cells transfected in the same way and viewed in the confocal microscope. Most HEK293 cells are not transfected so only the nucleus of these cells can be visualized with a blue DNA stain. Cells which are transfected with mCherry are bright red. Staining with ARG10758 anti-mCherry antibody is shown in Green. Green antibody staining is only seen cells which express mCherry, as expected, and the superimposition of the green and red results in an orange signal. Interestingly stronger mCherry staining is seen in the nucleus, possibly due to degradation of some Cherry molecules to release the low molecular weight mCherry fluorochrome.



ARG10758 anti-mCherry antibody WB image

Western blot: 1) HEK293 cells transfected with pFin-EF1-mCherry vector, and 2) HEK293 cells which were not transfected with this vector. The blots were stained with ARG10758 anti-mCherry antibody at 1: 2000 dilution.