

## ARG10751 anti-TAF15 antibody [4D71]

Package: 50 µl  
Store at: -20°C

### Summary

Product Description	Mouse Monoclonal antibody [4D71] recognizes TAF15
Tested Reactivity	Hu, Ms
Tested Application	ICC/IF, IHC-Fr, WB
Host	Mouse
Clonality	Monoclonal
Clone	4D71
Isotype	IgG1
Target Name	TAF15
Species	Human
Immunogen	Full length recombinant Human TAF15 expressed in and purified from E. coli.
Conjugation	Un-conjugated
Alternate Names	RBP56; TATA-binding protein-associated factor 2N; RNA-binding protein 56; TAF2N; II; Npl3; TAF; TAFII68; 68 kDa TATA-binding protein-associated factor

### Application Instructions

Application table	Application	Dilution
	ICC/IF	1:500 - 1:1000
	IHC-Fr	1:500 - 1:1000
	WB	1:1000
Application Note	* The dilutions indicate recommended starting dilutions and the optimal dilutions or concentrations should be determined by the scientist.	

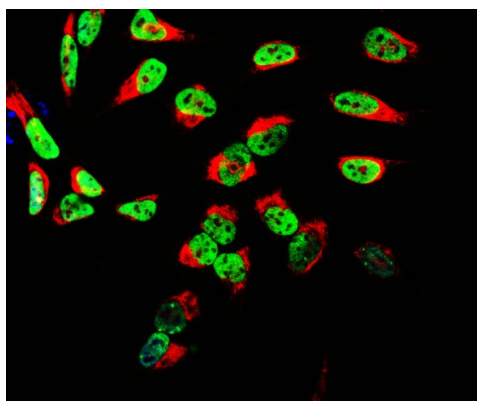
### Properties

Form	Liquid
Purification	Affinity purification.
Buffer	PBS and 50% Glycerol.
Stabilizer	50% Glycerol
Concentration	1 mg/ml
Storage instruction	For continuous use, store undiluted antibody at 2-8°C for up to a week. For long-term storage, aliquot and store at -20°C. Storage in frost free freezers is not recommended. Avoid repeated freeze/thaw cycles. Suggest spin the vial prior to opening. The antibody solution should be gently mixed before use.
Note	For laboratory research only, not for drug, diagnostic or other use.

## Bioinformation

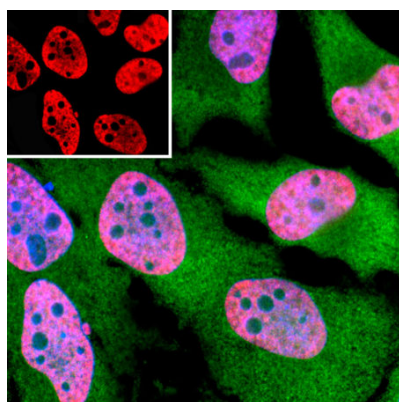
Database links	<a href="#">GeneID: 8148 Human</a> <a href="#">Swiss-port # Q92804 Human</a>
Gene Symbol	TAF15
Gene Full Name	TAF15 RNA polymerase II, TATA box binding protein (TBP)-associated factor, 68kDa
Background	This gene encodes a member of the TET family of RNA-binding proteins. The encoded protein plays a role in RNA polymerase II gene transcription as a component of a distinct subset of multi-subunit transcription initiation factor TFIID complexes. Translocations involving this gene play a role in acute leukemia and extraskeletal myxoid chondrosarcoma, and mutations in this gene may play a role in amyotrophic lateral sclerosis. Alternatively spliced transcript variants encoding multiple isoforms have been observed for this gene. [provided by RefSeq, May 2012]
Function	RNA and ssDNA-binding protein that may play specific roles during transcription initiation at distinct promoters. Can enter the preinitiation complex together with the RNA polymerase II (Pol II). [UniProt]
Calculated Mw	62 kDa
PTM	Dimethylated by PRMT1 at Arg-206 to asymmetric dimethylarginine. The methylation may favor nuclear localization and positive regulation of TAF15 transcriptional activity. ADP-ribosylated during genotoxic stress.

## Images



ARG10751 anti-TAF15 antibody [4D71] ICC/IF image

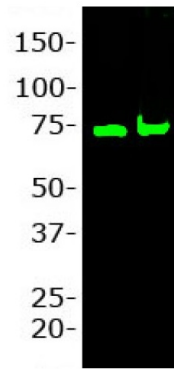
Immunocytochemistry: HeLa cell cultures stained with ARG10751 anti-TAF15 antibody [4D71] (green) and co-stained with chicken antibody to vimentin (red). ARG10751 anti-TAF15 antibody [4D71] reveals a granular nuclear localization typical of many RNA associated proteins. Blue is a DNA stain.



ARG10751 anti-TAF15 antibody [4D71] ICC/IF image

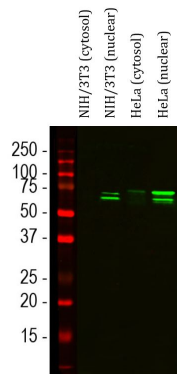
Immunofluorescence: HeLa cells stained with ARG10751 anti-TAF15 antibody [4D71] (red) at 1:500 dilution and costained with Rabbit pAb to GAPDH (green) at 1:1000 dilution. Hoechst (blue) for nuclear staining.

Clone 4D71 reveals TAF15 protein expressed exclusively in the nuclei of the cells, while GAPDH antibody produces strong cytoplasmic staining.



ARG10751 anti-TAF15 antibody [4D71] WB image

Western blot: 20 µg of 1) HeLa, and 2) Hek293 cell lysates stained with ARG10751 anti-TAF15 antibody [4D71] at 1: 1000 dilution.



ARG10751 anti-TAF15 antibody [4D71] WB image

Western blot: NIH/3T3 (cytosol), NIH/3T3 (nuclear), HeLa (cytosol) and HeLa (nuclear). The blots were stained with ARG10751 anti-TAF15 antibody [4D71] (green) at 1:1000 dilution.