

ARG10739 anti-SCGN / Secretagogin antibody

Package: 50 µl
Store at: -20°C

Summary

Product Description	Rabbit Polyclonal antibody recognizes SCGN / Secretagogin
Tested Reactivity	Hu, Ms, Rat
Tested Application	ICC/IF, IHC-Fr, WB
Host	Rabbit
Clonality	Polyclonal
Isotype	IgG
Target Name	SCGN / Secretagogin
Species	Human
Immunogen	Full-length recombinant Human secretagogin protein.
Conjugation	Un-conjugated
Alternate Names	SEGN; DJ501N12.8; setagin; SECRET; CALBL; Secretagogin

Application Instructions

Application table	Application	Dilution
	ICC/IF	1:1000 - 1:2000
	IHC-Fr	1:1000 - 1:2000
	WB	1:1000 - 1:5000
Application Note	* The dilutions indicate recommended starting dilutions and the optimal dilutions or concentrations should be determined by the scientist.	

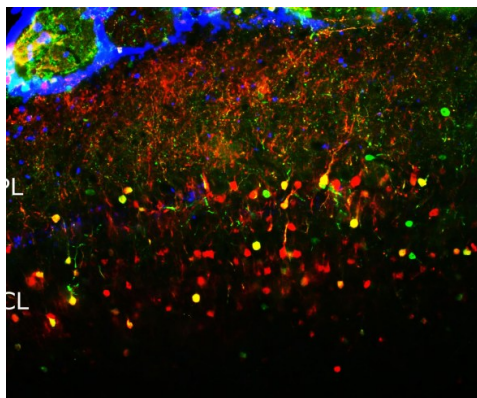
Properties

Form	Liquid
Purification	Affinity purification.
Buffer	PBS and 50% Glycerol.
Stabilizer	50% Glycerol
Concentration	1 mg/ml
Storage instruction	For continuous use, store undiluted antibody at 2-8°C for up to a week. For long-term storage, aliquot and store at -20°C. Storage in frost free freezers is not recommended. Avoid repeated freeze/thaw cycles. Suggest spin the vial prior to opening. The antibody solution should be gently mixed before use.
Note	For laboratory research only, not for drug, diagnostic or other use.

Bioinformation

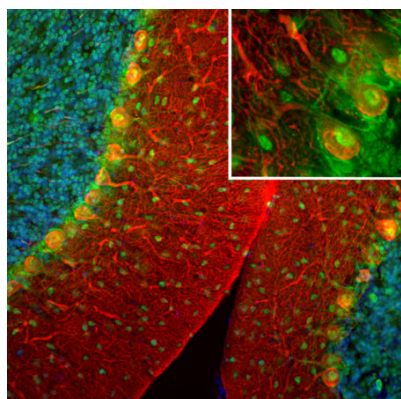
Gene Symbol	SCGN
Gene Full Name	secretagogin, EF-hand calcium binding protein
Background	The encoded protein is a secreted calcium-binding protein which is found in the cytoplasm. It is related to calbindin D-28K and calretinin. This protein is thought to be involved in KCL-stimulated calcium flux and cell proliferation. [provided by RefSeq, Jul 2008]
Calculated Mw	32 kDa

Images



ARG10739 anti-SCGN / Secretagogin antibody IHC image

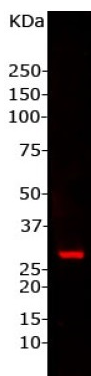
IHC: Adult Mouse olfactory bulb floating section stained with ARG10739 anti-SCGN / Secretagogin antibody at 1:1000 (red) and co-stained with our chicken polyclonal antibody to calretinin at 1:1000 (green). Secretagogin is predominantly expressed in cells in external plexiform lay (EPL) and granular cell lay (GCL) in olfactory bulb. Secretagogin coexists with calretinin in some cells in GCL, so these cells appear yellow. Secretagogin is found in both cell body and processes. Blue is a DNA stain.



ARG10739 anti-SCGN / Secretagogin antibody IHC-Fr image

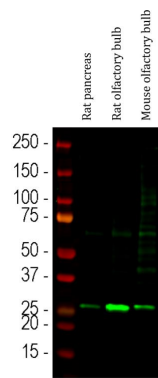
Immunohistochemistry: Frozen section of Rat brain cerebellum stained with ARG10739 anti-SCGN / Secretagogin antibody (green) at 1:1000 dilution and costained with Mouse mAb to calbindin (red) at 1:1000 dilution. DAPI (blue) for nuclear staining. (Sample preparation: Following transcardial perfusion with 4% paraformaldehyde, brain was post fixed for 24 hours, cut to 45 μ M, and free-floating sections were stained with the above antibodies.)

The SCGN antibody stains granule cells and interneurons while calbindin antibody reveals protein expressed in dendrites and perikarya of Purkinje cells in the molecular layer of the cerebellum.



ARG10739 anti-SCGN / Secretagogin antibody WB image

Western blot: Rat pancreas lysate stained with ARG10739 anti-SCGN / Secretagogin antibody at 1:1000 dilution.



ARG10739 anti-SCGN / Secretagoin antibody WB image

Western blot: Rat pancreas, Rat olfactory bulb and Mouse olfactory bulb lysates stained with ARG10739 anti-SCGN / Secretagoin antibody (green) at 1:1000 dilution.