

## ARG10726 anti-Peripherin antibody

Package: 50 µl  
Store at: -20°C

### Summary

Product Description	Rabbit Polyclonal antibody recognizes Peripherin
Tested Reactivity	Hu, Ms, Rat, Cow, Pig
Tested Application	ICC/IF, IHC-Fr, WB
Host	Rabbit
Clonality	Polyclonal
Isotype	IgG
Target Name	Peripherin
Species	Human
Immunogen	Recombinant Human peripherin expressed in and purified from E. coli.
Conjugation	Un-conjugated
Alternate Names	Peripherin; NEF4; PRPH1; Neurofilament 4

### Application Instructions

Application table	Application	Dilution
	ICC/IF	1:2000
	IHC-Fr	1:2000
	WB	1:1000 - 1:2000
Application Note	* The dilutions indicate recommended starting dilutions and the optimal dilutions or concentrations should be determined by the scientist.	

### Properties

Form	Liquid
Purification	Unpurified.
Buffer	Serum.
Storage instruction	For continuous use, store undiluted antibody at 2-8°C for up to a week. For long-term storage, aliquot and store at -20°C or below. Storage in frost free freezers is not recommended. Avoid repeated freeze/thaw cycles. Suggest spin the vial prior to opening. The antibody solution should be gently mixed before use.
Note	For laboratory research only, not for drug, diagnostic or other use.

### Bioinformation

Database links	<a href="#">GeneID: 24688 Rat</a>
----------------	-----------------------------------

[GeneID: 5630 Human](#)

[Swiss-port # P41219 Human](#)

Gene Symbol PRPH

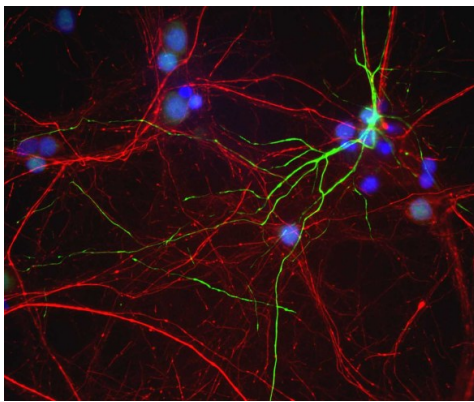
Gene Full Name peripherin

Background This gene encodes a cytoskeletal protein found in neurons of the peripheral nervous system. The encoded protein is a type III intermediate filament protein with homology to other cytoskeletal proteins such as desmin, and is a different protein that the peripherin found in photoreceptors. Mutations in this gene have been associated with susceptibility to amyotrophic lateral sclerosis. [provided by RefSeq, Jul 2008]

Function Class-III neuronal intermediate filament protein. [UniProt]

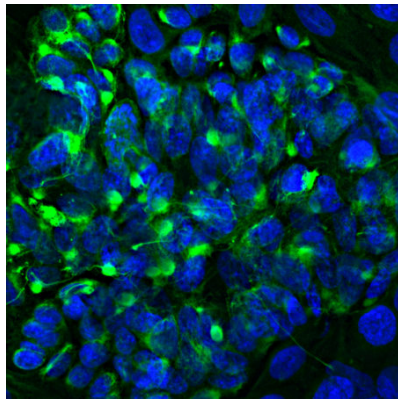
Calculated Mw 54 kDa

## Images



ARG10726 anti-Peripherin antibody ICC/IF image

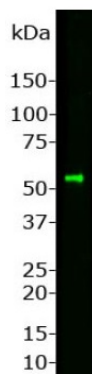
Immunocytochemistry: Mixed neuron / glia cultures from newborn Rat brain stained with ARG10726 anti-Peripherin antibody (green) and co-stained with chicken polyclonal antibody to NF-H (red). A class of large neurons, like the one at the top right of this image, contain peripherin, while the majority of neurons and their processes contain NF-H and not peripherin. The blue channel reveals the localization of DNA.



ARG10726 anti-Peripherin antibody ICC/IF image

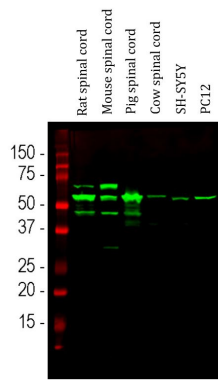
Immunofluorescence: PC-12 cells stained with ARG10726 anti-Peripherin antibody (green) at 1:2000 dilution. Hoechst (blue) for nuclear staining.

Peripherin, one of the Class III family of intermediate filament subunit proteins, is a major component of the PC-12 cell forming a perinuclear cap, with some filaments visible in the cytoplasm.



ARG10726 anti-Peripherin antibody WB image

Western blot: Whole Rat spinal cord homogenate stained with ARG10726 anti-Peripherin antibody at 1:1000 dilution. A prominent band running with an apparent SDS-PAGE molecular weight of ~57 kDa corresponds to Peripherin.



#### ARG10726 anti-Peripherin antibody WB image

Western blot: Rat spinal cord, Mouse spinal cord, Pig spinal cord, Cow spinal cord, SH-SY5Y and PC12 cell lysates stained with ARG10726 anti-Peripherin antibody (green) at 1:10000 dilution.

The major band at ~ 57 kDa corresponds to the major peripherin protein isoform, while other bands presumably represent protein products of alternate transcripts of the peripherin gene.