

ARG10694 anti-Aldolase C antibody [1A1]

Package: 50 µl
Store at: -20°C

Summary

Product Description	Mouse Monoclonal antibody [1A1] recognizes Aldolase C
Tested Reactivity	Hu, Ms, Rat, Cow, Hrs, Pig
Predict Reactivity	Chk
Tested Application	ICC/IF, IHC-Fr, WB
Host	Mouse
Clonality	Monoclonal
Clone	1A1
Isotype	IgG1
Target Name	Aldolase C
Immunogen	C-terminal sequence KYEGSGEDGGAAQSLYIANHAY
Conjugation	Un-conjugated
Alternate Names	EC 4.1.2.13; Brain-type aldolase; Fructose-bisphosphate aldolase C; ALDC

Application Instructions

Application table	Application	Dilution
	ICC/IF	1:500 - 1:1000
	IHC-Fr	1:500 - 1:1000
	WB	1:1000
Application Note	* The dilutions indicate recommended starting dilutions and the optimal dilutions or concentrations should be determined by the scientist.	

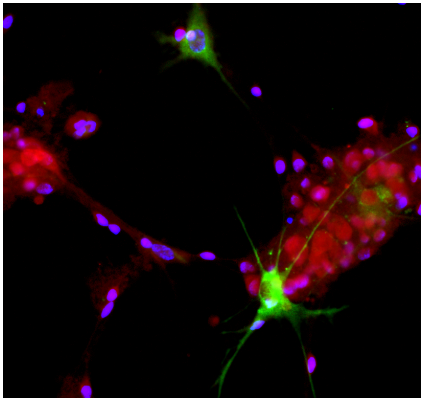
Properties

Form	Liquid
Purification	Affinity purification.
Buffer	PBS and 50% Glycerol.
Stabilizer	50% Glycerol
Concentration	1 mg/ml
Storage instruction	For continuous use, store undiluted antibody at 2-8°C for up to a week. For long-term storage, aliquot and store at -20°C. Storage in frost free freezers is not recommended. Avoid repeated freeze/thaw cycles. Suggest spin the vial prior to opening. The antibody solution should be gently mixed before use.
Note	For laboratory research only, not for drug, diagnostic or other use.

Bioinformation

Gene Symbol	ALDOC
Gene Full Name	aldolase C, fructose-bisphosphate
Background	This gene encodes a member of the class I fructose-biphosphate aldolase gene family. Expressed specifically in the hippocampus and Purkinje cells of the brain, the encoded protein is a glycolytic enzyme that catalyzes the reversible aldol cleavage of fructose-1,6-biphosphate and fructose 1-phosphate to dihydroxyacetone phosphate and either glyceraldehyde-3-phosphate or glyceraldehyde, respectively. [provided by RefSeq, Jul 2008]
Calculated Mw	39 kDa

Images



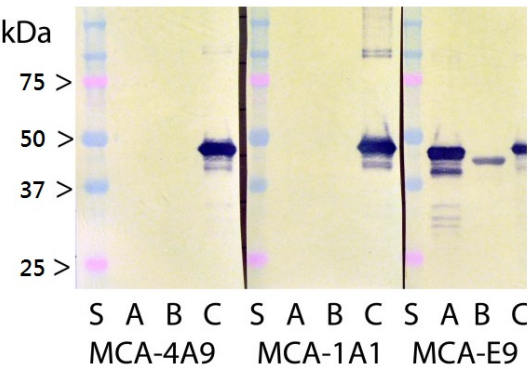
ARG10694 anti-Aldolase C antibody [1A1] ICC/IF image

Immunocytochemistry: Rat mixed neuron / glial cultures stained with ARG10694 anti-Aldolase C antibody [1A1] (green) and co-stained with rabbit antibody to NeuN/FOX3 antibody (RPCA-FOX3, red). MCA-1A1 antibody reveals strong cytoplasmic staining in astrocytes, while Rabbit Fox3/NeuN antibody shows nuclear and distal cytoplasmic staining in neuron cells and is complete absence of astrocytes. Blue is a DNA stain.



ARG10694 anti-Aldolase C antibody [1A1] WB image

Western blot: Crude Rat brain lysates stained with ARG10694 anti-Aldolase C antibody [1A1]. Other studies show that this antibody is completely specific for Aldolase C, and does not react with recombinant Human Aldolase A or B.



ARG10694 anti-Aldolase C antibody [1A1] WB image

Western blot: Recombinant Human Aldolase A, B and C with three monoclonal antibodies as indicated showing binding to all three gene products. Lane labelled S show molecular weight standards, while lanes A, B and C contain recombinant full length His-tagged Human Aldolase A, B and C respectively. The epitope for ARG10694 anti-Aldolase C antibody [1A1] is within the C-terminal peptide of the molecule which is less conserved between the three Aldolases. Clone 4A9 binds to the N-terminal peptide and also is specific for Aldolase C, while clone E9 binds to the less conserved core of the molecule and recognizes all three Aldolase C gene products.