

ARG10682 anti-CK1 alpha antibody

Package: 50 µl
Store at: -20°C

Summary

Product Description	Chicken Polyclonal antibody recognizes CK1 alpha
Tested Reactivity	Hu, Ms, Rat, Cow, Hrs, Pig
Predict Reactivity	Chk
Tested Application	ICC/IF, IHC-Fr, WB
Host	Chicken
Clonality	Polyclonal
Isotype	IgY
Target Name	CK1 alpha
Immunogen	Recombinant full length CSNK1A1 protein (shortest isoform).
Conjugation	Un-conjugated
Alternate Names	CK1a; PRO2975; HEL-S-77p; CKIa; HLCDGP1; CK1; CKI-alpha; EC 2.7.11.1; Casein kinase I isoform alpha

Application Instructions

Application table	Application	Dilution
	ICC/IF	1:500 - 1:1000
	IHC-Fr	Assay-dependent
	WB	1:10000
Application Note	* The dilutions indicate recommended starting dilutions and the optimal dilutions or concentrations should be determined by the scientist.	

Properties

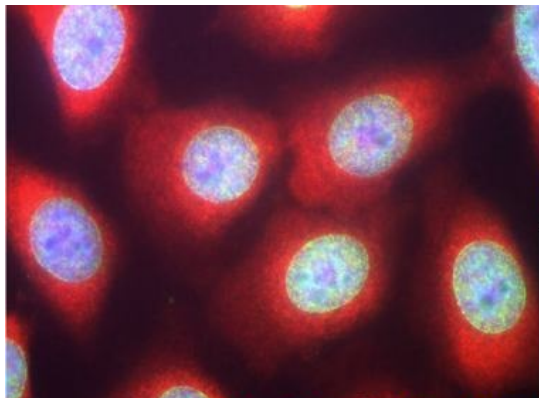
Form	Liquid
Buffer	PBS and 0.02% Sodium azide.
Preservative	0.02% Sodium azide
Storage instruction	For continuous use, store undiluted antibody at 2-8°C for up to a week. For long-term storage, aliquot and store at -20°C or below. Storage in frost free freezers is not recommended. Avoid repeated freeze/thaw cycles. Suggest spin the vial prior to opening. The antibody solution should be gently mixed before use.
Note	For laboratory research only, not for drug, diagnostic or other use.

Bioinformation

Gene Symbol	CSNK1A1
-------------	---------

Gene Full Name	casein kinase 1, alpha 1
Function	Casein kinases are operationally defined by their preferential utilization of acidic proteins such as caseins as substrates. It can phosphorylate a large number of proteins. Participates in Wnt signaling. Phosphorylates CTNNB1 at 'Ser-45'. May phosphorylate PER1 and PER2. May play a role in segregating chromosomes during mitosis. [UniProt]
Calculated Mw	39 kDa

Images



ARG10682 anti-CK1 alpha antibody ICC/IF image

Immunocytochemistry: HeLa cells stained with ARG10682 anti-CK1 alpha antibody (red) and co-stained with panspecific Mouse monoclonal antibody to nuclear pore complexes (green). Casein kinase 1 alpha has a particulate distribution both in the nucleus and the cytoplasm. Blue is the Hoechst DNA stain.



ARG10682 anti-CK1 alpha antibody WB image

Western blot: Whole Rat spinal cord homogenate stained with ARG10682 anti-CK1 alpha antibody at 1:10000 dilution. A prominent band running with an apparent SDS-PAGE molecular weight of ~38 kDa and a less prominent band at ~34 kDa corresponds to other CK1 alpha isotypes.