

## ARG10675 anti-IGFBP3 antibody

Package: 50 µg  
Store at: -20°C

### Summary

Product Description	Rabbit Polyclonal antibody recognizes IGFBP3
Tested Reactivity	Hu, Ms, Rat
Tested Application	IHC-P, WB
Host	Rabbit
Clonality	Polyclonal
Isotype	IgG
Target Name	IGFBP3
Species	Human
Immunogen	Synthetic peptide corresponding to the sequence at a.a 214-252 (RREMEDTLNHLKFLNVLSRPGVHIPNCDKKGFYKKKQCR) around the C-terminus of human IGFBP3 protein.
Conjugation	Un-conjugated
Alternate Names	IBP3; BP-53; IGF-binding protein 3; IGFBP-3

### Application Instructions

Application table	Application	Dilution
	IHC-P	0.5 - 2 µg/ml
	WB	0.1 - 0.5 µg/ml
Application Note	IHC-P: Antigen Retrieval: Boil tissue sections in 10 mM Citrate buffer (pH 6.0) for 20 min * The dilutions indicate recommended starting dilutions and the optimal dilutions or concentrations should be determined by the scientist.	
Positive Control	Rat heart, Rat brain, Rat liver, PC-12, U-87 MG, Mouse kidney, Mouse heart and Mouse brain	
Observed Size	~ 40 kDa	

### Properties

Form	Liquid
Purification	Affinity purification with immunogen.
Buffer	1X PBS, 0.025% Sodium azide and 2.7% BSA
Preservative	0.027% Sodium azide
Stabilizer	2.7% BSA
Concentration	0.5 mg/ml
Storage instruction	For continuous use, store undiluted antibody at 2-8°C for up to a week. For long-term storage, aliquot and store at -20°C or below. Storage in frost free freezers is not recommended. Avoid repeated freeze/thaw cycles. Suggest spin the vial prior to opening. The antibody solution should be gently mixed

before use.

#### Note

For laboratory research only, not for drug, diagnostic or other use.

## Bioinformation

Gene Symbol

IGFBP3

Gene Full Name

Insulin Like Growth Factor Binding Protein 3

Background

This gene is a member of the insulin-like growth factor binding protein (IGFBP) family and encodes a protein with an IGFBP domain and a thyroglobulin type-I domain. The protein forms a ternary complex with insulin-like growth factor acid-labile subunit (IGFALS) and either insulin-like growth factor (IGF) I or II. In this form, it circulates in the plasma, prolonging the half-life of IGFs and altering their interaction with cell surface receptors. Alternate transcriptional splice variants, encoding different isoforms, have been characterized. [provided by RefSeq, Jul 2008]

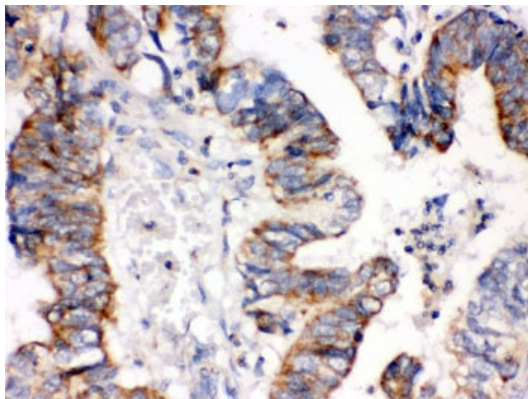
Calculated Mw

32 kDa

PTM

Phosphorylated by FAM20C in the extracellular medium.

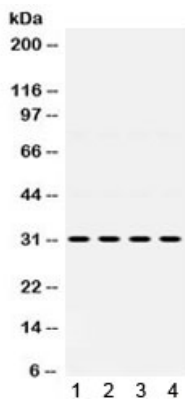
## Images



ARG10675 anti-IGFBP3 antibody IHC-P image

Immunohistochemistry: Human intestinal cancer (paraffin-embedded sections) stained with ARG10675 anti-IGFBP3 antibody

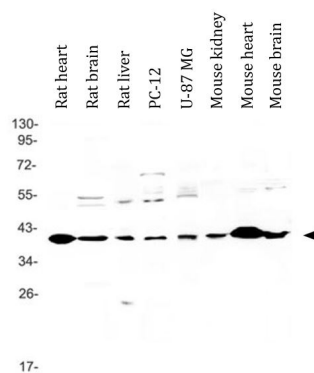
Human intestinal cancer



ARG10675 anti-IGFBP3 antibody WB image

Western blot: 1) rat kidney, 2) rat liver, 3) human SGC, 4) human 22RV1 lysates stained with ARG10675 anti-IGFBP3 antibody

1) rat kidney, 2) rat liver, 3) human SGC, 4) human 22RV1



#### ARG10675 anti-IGFBP3 antibody WB image

Western blot: Rat heart, Rat brain, Rat liver, PC-12, U-87 MG, Mouse kidney, Mouse heart and Mouse brain lysates stained with ARG10675 anti-IGFBP3 antibody.