

ARG10600 anti-hCG Receptor / LH Receptor antibody

Package: 50 µg
Store at: -20°C

Summary

| | |
|---------------------|---|
| Product Description | Rabbit Polyclonal antibody recognizes hCG Receptor / LH Receptor |
| Tested Reactivity | Hu, Rat |
| Tested Application | IHC-P, WB |
| Host | Rabbit |
| Clonality | Polyclonal |
| Isotype | IgG |
| Target Name | hCG Receptor / LH Receptor |
| Species | Human |
| Immunogen | Synthetic peptide from the N-terminus of hCG Receptor / LH Receptor. (YLSICNTGIRKFPDVTK) |
| Conjugation | Un-conjugated |
| Alternate Names | LCGR; Luteinizing hormone receptor; Lutropin-choriogonadotropic hormone receptor; LH/CGR; LGR2; LHRHR; ULG5; HHG; LHR; LSH-R; LH/CG-R |

Application Instructions

| Application table | Application | Dilution |
|-------------------|--|---------------|
| | IHC-P | 0.5 - 1 µg/ml |
| | WB | 0.5 - 1 µg/ml |
| Application Note | <p>Antigen Retrieval for IHC-P: steamed with pH6 citrate buffer.</p> <p>* The dilutions indicate recommended starting dilutions and the optimal dilutions or concentrations should be determined by the scientist.</p> | |

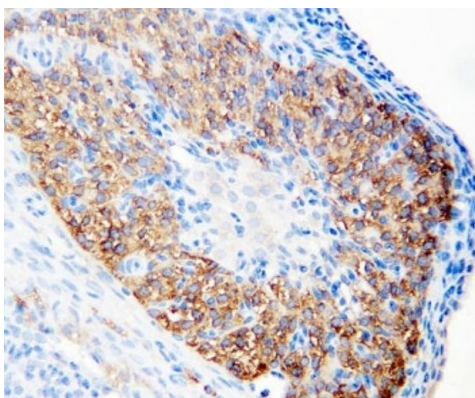
Properties

| | |
|---------------------|---|
| Form | Liquid |
| Purification | Affinity purification with immunogen. |
| Buffer | PBS, 0.025% Sodium azide and 2.5% BSA. |
| Preservative | 0.025% Sodium azide |
| Stabilizer | 2.5% BSA |
| Concentration | 0.5 mg/ml |
| Storage instruction | For continuous use, store undiluted antibody at 2-8°C for up to a week. For long-term storage, aliquot and store at -20°C. Storage in frost free freezers is not recommended. Avoid repeated freeze/thaw cycles. Suggest spin the vial prior to opening. The antibody solution should be gently mixed before use. |
| Note | For laboratory research only, not for drug, diagnostic or other use. |

Bioinformation

| | |
|----------------|--|
| Database links | GeneID: 25477 Rat GeneID: 3973 Human Swiss-port # P16235 Rat Swiss-port # P22888 Human |
| Gene Symbol | LHCGR |
| Gene Full Name | luteinizing hormone/choriogonadotropin receptor |
| Background | This gene encodes the receptor for both luteinizing hormone and choriogonadotropin. This receptor belongs to the G-protein coupled receptor 1 family, and its activity is mediated by G proteins which activate adenylate cyclase. Mutations in this gene result in disorders of male secondary sexual character development, including familial male precocious puberty, also known as testotoxicosis, hypogonadotropic hypogonadism, Leydig cell adenoma with precocious puberty, and male pseudohermaphroditism with Leydig cell hypoplasia. [provided by RefSeq, Jul 2008] |
| Function | Receptor for lutropin-choriogonadotropic hormone. The activity of this receptor is mediated by G proteins which activate adenylate cyclase. [UniProt] |
| Calculated Mw | 79 kDa |
| PTM | Sulfated. |

Images



ARG10600 anti-hCG Receptor antibody IHC-P image

Immunohistochemistry: Rat ovary tissue stained with ARG10600 anti-hCG Receptor antibody.



ARG10600 anti-hCG Receptor antibody WB image

Western blot: MCF-7 cell lysate stained with ARG10600 anti-hCG Receptor antibody.