

ARG10571 Rabbit anti-Human Kappa Light Chain antibody [A21-Y]

Package: 100 µl
Store at: -20°C

Summary

Product Description	Rabbit Monoclonal antibody [A21-Y] recognizes Human Kappa Light Chain
Tested Reactivity	Hu
Tested Application	IHC-P
Host	Rabbit
Clonality	Monoclonal
Clone	A21-Y
Isotype	IgG
Target Name	Kappa Light Chain
Species	Human
Immunogen	Synthetic peptide around the N-terminus of Human kappa light chain IgG
Conjugation	Un-conjugated
Alternate Names	Ig kappa chain C region; HCAK1; IGKCD

Application Instructions

Application table	Application	Dilution
	IHC-P	1:100 - 1:500
Application Note	* The dilutions indicate recommended starting dilutions and the optimal dilutions or concentrations should be determined by the scientist.	

Properties

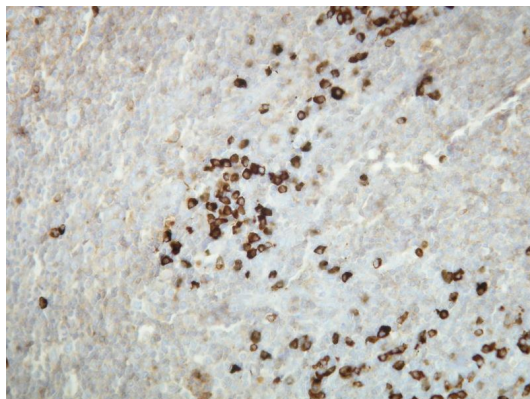
Form	Liquid
Buffer	20 mM Tris-HCl (pH 8.0), 0.05% Sodium azide and 20 mg/ml BSA
Preservative	0.05% Sodium azide
Stabilizer	20 mg/ml BSA
Storage instruction	For continuous use, store undiluted antibody at 2-8°C for up to a week. For long-term storage, aliquot and store at -20°C or below. Storage in frost free freezers is not recommended. Avoid repeated freeze/thaw cycles. Suggest spin the vial prior to opening. The antibody solution should be gently mixed before use.
Note	For laboratory research only, not for drug, diagnostic or other use.

Bioinformation

Database links	GeneID: 3514 Human
----------------	------------------------------------

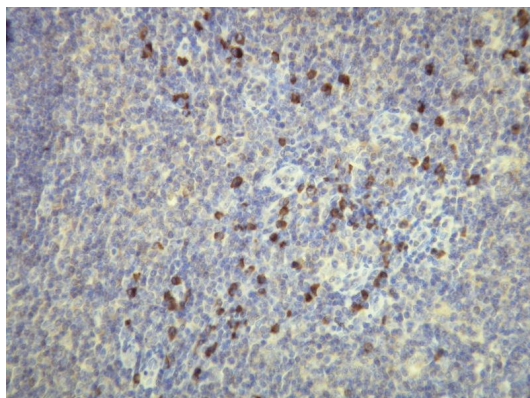
Gene Symbol	IGKC
Gene Full Name	immunoglobulin kappa constant
Highlight	Related news: Comprehensive anti-Human secondary antibodies

Images



ARG10571 Rabbit anti-Human Kappa Light Chain antibody [A21-Y]
IHC-P image

Immunohistochemistry: Formalin fixed, paraffin embedded Human plasma cells of the palatine tonsil tissue (4 μ m sections) stained with ARG10571 Rabbit anti-Human Kappa Light Chain antibody [A21-Y].



ARG10571 Rabbit anti-Human Kappa Light Chain antibody [A21-Y]
IHC-P image

Immunohistochemistry: Formalin fixed, paraffin embedded Human plasma cells of the palatine tonsil tissue (4 μ m sections) stained with ARG10571 Rabbit anti-Human Kappa Light Chain antibody [A21-Y].