

## ARG10569 Rabbit anti-Human IgG antibody [E20-V]

Package: 100 µl  
Store at: -20°C

### Summary

Product Description	Rabbit Monoclonal antibody [E20-V] recognizes Human IgG
Tested Reactivity	Hu
Tested Application	IHC-P
Host	Rabbit
Clonality	Monoclonal
Clone	E20-V
Isotype	IgG
Target Name	IgG
Species	Human
Immunogen	Synthetic peptide around the internal domain of Human IgG-1 chain C region
Conjugation	Un-conjugated
Alternate Names	Ig gamma-1 chain C region

### Application Instructions

Application table	Application	Dilution
	IHC-P	1:100 - 1:300
Application Note	* The dilutions indicate recommended starting dilutions and the optimal dilutions or concentrations should be determined by the scientist.	

### Properties

Form	Liquid
Buffer	20 mM Tris-HCl (pH 8.0), 0.05% Sodium azide and 20 mg/ml BSA
Preservative	0.05% Sodium azide
Stabilizer	20 mg/ml BSA
Storage instruction	For continuous use, store undiluted antibody at 2-8°C for up to a week. For long-term storage, aliquot and store at -20°C or below. Storage in frost free freezers is not recommended. Avoid repeated freeze/thaw cycles. Suggest spin the vial prior to opening. The antibody solution should be gently mixed before use.
Note	For laboratory research only, not for drug, diagnostic or other use.

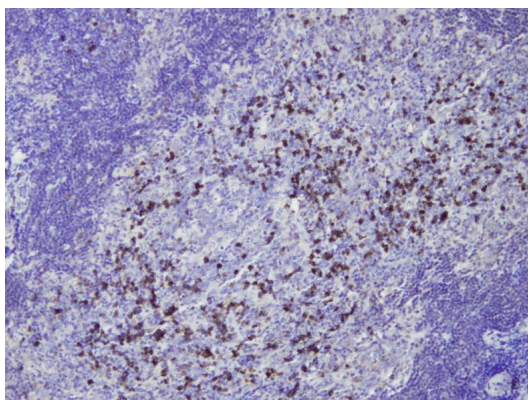
### Bioinformation

Database links	<a href="#">GeneID: 3500 Human</a>
----------------	------------------------------------

Gene Symbol	IGHG1
Gene Full Name	immunoglobulin heavy constant gamma 1 (G1m marker)

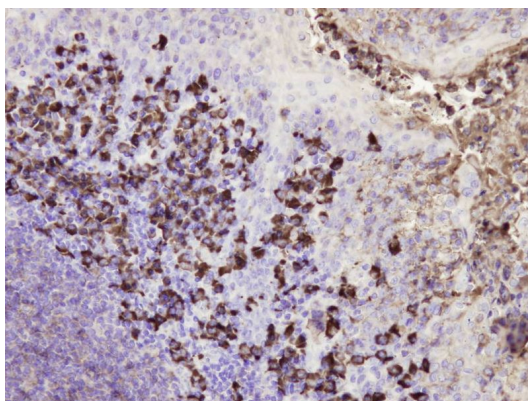
## Images

---



ARG10569 Rabbit anti-Human IgG antibody [E20-V] IHC-P image

Immunohistochemistry: Formalin fixed, paraffin embedded Human plasma cells in the case of IgG4-related chronic sclerosing sialoadenitis tissues (4  $\mu$ m sections) stained with ARG10569 Rabbit anti-Human IgG antibody [E20-V].



ARG10569 Rabbit anti-Human IgG antibody [E20-V] IHC-P image

Immunohistochemistry: Formalin fixed, paraffin embedded Human plasma cells in tonsillar tissue (4  $\mu$ m sections) stained with ARG10569 Rabbit anti-Human IgG antibody [E20-V].