

ARG10206 anti-beta 2 Microglobulin antibody [D2E9]

Package: 100 µg
Store at: -20°C

Summary

Product Description	Mouse Monoclonal antibody [D2E9] recognizes Human beta 2 microglobulin
Tested Reactivity	Hu
Tested Application	ELISA, FACS, ICC/IF, WB
Host	Mouse
Clonality	Monoclonal
Clone	D2E9
Isotype	IgG1, kappa
Target Name	beta 2 Microglobulin
Species	Human
Immunogen	Highly purified beta 2 microglobulin from human urine
Conjugation	Un-conjugated
Alternate Names	Beta-2-microglobulin

Application Instructions

Application Note	ELISA: Clone D2E9 can be used as capturer in Sandwich ELISA for B2MG detection. * The dilutions indicate recommended starting dilutions and the optimal dilutions or concentrations should be determined by the scientist.
------------------	---

Properties

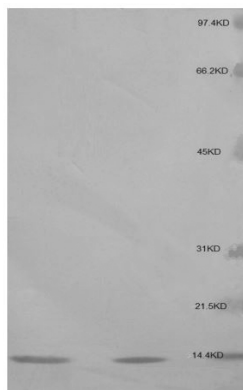
Form	Liquid
Purification	Protein G affinity purified
Buffer	0.01M PBS (pH 7.2)
Storage instruction	For continuous use, store undiluted antibody at 2-8°C for up to a week. For long-term storage, aliquot and store at -20°C or below. Storage in frost free freezers is not recommended. Avoid repeated freeze/thaw cycles. Suggest spin the vial prior to opening. The antibody solution should be gently mixed before use.
Note	For laboratory research only, not for drug, diagnostic or other use.

Bioinformation

Database links	GeneID: 567 Human Swiss-port # P61769 Human
Gene Symbol	B2M

Gene Full Name	beta-2-microglobulin
Background	Human beta 2 microglobulin (B2MG) is a component of major histocompatibility complex 1 (MHC1). It is abundant at the surface of lymphocytes and exists at the surface of all cell types except red cells and platelets. B2MG is normally filtered out of blood through glomeruli, but the process is impaired in patients with renal diseases. Elevated B2MG level is implicated with lymphoma, multiple myeloma, renal diseases, viral infections and auto-immune conditions.
Function	Component of the class I major histocompatibility complex (MHC). Involved in the presentation of peptide antigens to the immune system. [UniProt]
Highlight	Related Antibody Duos and Panels: ARG30078 Beta 2 Microglobulin ELISA Antibody Duo Related products: beta 2 Microglobulin antibodies ; beta 2 Microglobulin ELISA Kits ; beta 2 Microglobulin Duos / Panels ; Anti-Mouse IgG secondary antibodies ;
Research Area	Cancer antibody; Cell Biology and Cellular Response antibody
Calculated Mw	14 kDa
PTM	Glycation of Ile-21 is observed in long-term hemodialysis patients.

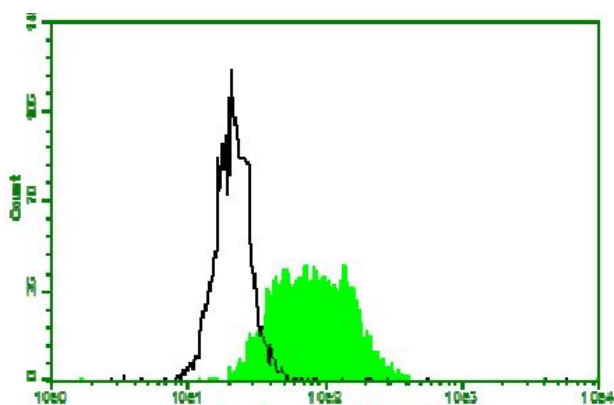
Images



ARG10206 anti-beta 2 Microglobulin antibody [D2E9] WB image

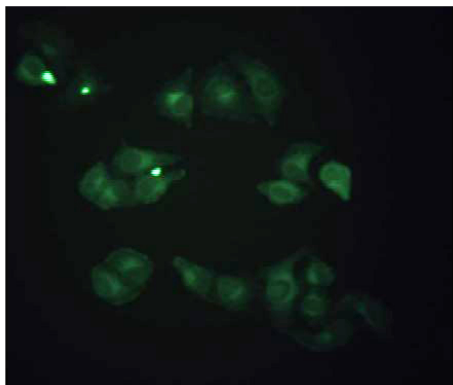
Western Blot: 1. B2MG antigen (100 ng) 2. Jurkat cell lysate stained with anti-beta 2 Microglobulin antibody [D2E9] (ARG10206) at 1µg/mL

The molecular weight of B2MG is about 13-14KD



ARG10206 anti-beta 2 Microglobulin antibody [D2E9] Flow Cytometry image

Flow Cytometry: HeLa cells stained with anti-beta 2 Microglobulin antibody [D2E9] (ARG10206) followed by incubation with fluorescence labelled secondary antibody.



ARG10206 anti-beta 2 Microglobulin antibody [D2E9] ICC/IF image

Immunofluorescence: Methanol-fixed HeLa cells stained with anti-beta 2 Microglobulin antibody [D2E9] (ARG10206) (green)